

AboutTown

Official Magazine of the City of Edina



Celebrating 125 years: 1888-2013

AboutTown

Volume 24, Number 4
Autumn 2013

Circulation 25,000

Official Publication of the
City of Edina, Minnesota
4801 West 50th Street
Edina, Minnesota 55424
952-826-0359

www.EdinaMN.gov

Editor: Jennifer Bennerotte

Contributing Writers: Jordan Gilgenbach, Emilie Kastner,
David Katz, Katherine Lofrano, Kaylin Martin,
Frank Petrovic and Joe Sullivan

Photographer: Michael Braun

Layout Editor: Kaylin Martin

Publisher: City of Edina

About Town is produced by the City of Edina.
To advertise in *About Town*, call Barb Pederson, 612-998-7412.

Copyright 2013 by City of Edina,
4801 W. 50th St., Edina, MN 55424.

About Town is published quarterly by the City of Edina. The purpose of the magazine is to keep Edina residents informed of news, activities and programs that are important to them. We include articles of interest about our residents and community history as well.

About Town is printed on recycled paper to conform to City conservation guidelines.

Cover photo courtesy of the Edina Historical Society.

Students at Morningside School show off their handmade projects, circa 1940s.

Table Of Contents

Calendar Of Events	1
Autumn Calendar Highlights.....	4
A Word From The Mayor	5
Edina's First Lutheran Church Celebrates 75th Anniversary	6
It's Not Only Neighborly ... It's The Law	10
VEAP Moves Into Larger, More Functional Space.....	12
VEAP Gears Up For Holiday Toy Program	14
What's Barking In Edina Dog Parks?	16
Morningside Becomes First City-Recognized Neighborhood	18
Edina Welcomes New Southdale Transit Center	20
Edina Community Foundation: Challenging Our Community.....	22
Babbling Brook, Picturesque Pond Proposed For Promenade.....	24
Sports Enthusiast Catches New Position With Edina Parks & Recreation	28
Technology Enhances Voting Process	30
City Discounts Home Energy Squad Visits For Residents.....	32
Third-Annual Edina Film Festival On Screen Nov. 7-9.....	34
Founders' Day Celebration Wraps Up Quasquicentennial.....	38
Community Volunteers Enhance Learning For All Students.....	42
City Takes On Community Television Playback.....	44
Spaulding ... Stay!.....	46
Nolan Begins As Transportation Planner	48
Planning Matters	51
The Last Word	54

Edina's Premier Senior Living Opening October!

Now Accepting Reservations!

(952) 479-4624

6300 Colonial Way, Edina, MN 55436
TheWatersofEdina.com

THE WATERS
OF EDINA

thrive



October 2013

About Town Calendar

Sunday	Monday	Tuesday	Wednesday	Thursday	Friday	Saturday
		1 Edina Film Festival Poster Contest winner announced. 7 p.m., City Council & HRA, Edina City Hall.	2	3 Noon, Ms. Catherine & Friends, Edinborough Park. 4 p.m., Public Art Committee, Edina City Hall.	4	5
6 7 p.m., St. Louis Park Community Band, Edinborough Park.	7	8 7 p.m., Park Board, Edina City Hall. 7 p.m., Heritage Preservation Board, Edina City Hall.	9 7 p.m., Planning Commission, Edina City Hall.	10 People's Choice sculpture winners announced. 7 p.m., Energy & Environment Commission, Edina City Hall.	11	12
13 4-8 p.m., TRAIL Fundraiser, Water Park of America, 1700 E. American Blvd. 7 p.m., Bloomington Medalist Concert Band, Edinborough Park.	14	15 7 p.m., City Council & HRA, Edina City Hall.	16	17 No school for Edina Public Schools.	18 No school for Edina Public Schools.	19 10 a.m., The Author's Studio, Edina Art Center.
20 7 p.m., Zurah Shrine Band, Edinborough Park.	21 7 p.m., School Board, Edina Community Center.	22 7 p.m., Human Rights & Relations Commission, Edina City Hall.	23 7 p.m., Planning Commission, Edina City Hall.	24 4:30 p.m., Arts & Culture Commission, Edina City Hall. 6 p.m., Transportation Commission, Edina City Hall.	25 6-8 p.m., Halloween Party, Edinborough Park.	26 10 a.m.-5 p.m., Used Book Sale, Edina Library. 10 a.m.-1 p.m., Pumpkin Festival, 50th & France.
27 7 p.m., First John Philip Sousa Memorial Band, Edinborough Park.	28 10 a.m.-5 p.m., Bag Sale at Used Book Sale, Edina Library. 7 p.m., Grandview Community Advisory Team, Edina City Hall.	29 7 p.m., Star of the North Band, Edinborough Park.	30	31 Noon, Wonderful World of Woody, Edinborough Park.		

▼ Tear Here ▼

About Town Calendar

November 2013

Sunday	Monday	Tuesday	Wednesday	Thursday	Friday	Saturday
					1 7 p.m., South View Middle School 8/9 Grade Play, South View Middle School.	2 Northwoods Boutique opens at Braemar Golf Course. 7 p.m., South View Middle School 8/9 Grade Play, South View Middle School.
3 7 p.m., Seward Concert Band, Edinborough Park.	4 7 p.m., City Council & HRA, Edina City Hall.	5 Election Day. Polls open 7 a.m. to 8 p.m.	6	7 "Gifts! Gifts! Gifts!" sale opens at Edina Art Center. Edina Film Festival, Landmark Edina Cinema, 50th & France.	8 6:15-7:45 p.m., Cinderella's Princess Ball, Edina Senior Center. Edina Film Festival, Landmark Edina Cinema, 50th & France.	9 10 a.m., The Author's Studio, Edina Art Center. Edina Film Festival, Landmark Edina Cinema, 50th & France.
10 7 p.m., St. Paul Police Band, Edinborough Park.	11 Veterans Day. City Hall closed.	12 7 p.m., Park Board, Edina City Hall. 7 p.m., Heritage Preservation Board, Edina City Hall.	13 7 p.m., Planning Commission, Edina City Hall.	14 Noon, Dakota Wild Animals, Edinborough Park. 7 p.m., Energy & Environment Commission, Edina City Hall.	15 7 p.m. Edina High School fall musical, Edina High School.	16 7 p.m. Edina High School fall musical, Edina High School.
17 Northwoods Boutique closes at Braemar Golf Course. 7 p.m., Somewhat Dixieland Band, Edinborough Park.	18 7 p.m., School Board, Edina Community Center.	19 7 p.m., City Council & HRA, Edina City Hall.	20	21 4:30 p.m., Arts & Culture Commission, Edina City Hall. 6 p.m., Transportation Commission, Edina City Hall.	22	23
24 7 p.m., First John Philip Sousa Memorial Band, Edinborough Park.	25 No school for Edina Public Schools. 7 p.m., Grandview Community Advisory Team, Edina City Hall.	26 No school for Edina Public Schools. 7 p.m., Human Rights & Relations Commission, Edina City Hall.	27 No school for Edina Public Schools. 7 p.m., Planning Commission, Edina City Hall.	28 Thanksgiving. City Hall closed. No school for Edina Public Schools.	29 Day after Thanksgiving. City Hall closed. No school for Edina Public Schools.	30 5 p.m., Tree-Lighting Ceremony, 50th & France.

About Town Calendar

December 2013

Sunday	Monday	Tuesday	Wednesday	Thursday	Friday	Saturday
1 7 p.m., Minneapolis Police Band, Edinborough Park.	2	3 7 p.m., City Council & HRA, Edina City Hall. 7 p.m., South of the River Band, Edinborough Park.	4	5 Noon, Bob the Beachcomber, Edinborough Park. 4 p.m., Public Art Committee, Edina City Hall.	6	7 9-9:40 a.m. or 10-10:40 a.m., Santa's Breakfast at the Peak, Edinborough Park.
8 7 p.m., Prior Lake Windjammers, Edinborough Park.	9	10 7 p.m., Park Board, Edina City Hall. 7 p.m., Heritage Preservation Board, Edina City Hall.	11 7 p.m., Planning Commission, Edina City Hall.	12 5 p.m., Founders' Day Open House, Grange Hall and Cahill School, Tupa Park. 7 p.m., Founders' Day Celebration, Edina City Hall.	13 7 p.m., South View Middle School 6/7 Grade Play, South View Middle School.	14 10 a.m., The Author's Studio, Edina Art Center. 7 p.m., South View Middle School 6/7 Grade Play, South View Middle School.
15 7 p.m., St. Louis Park, Community Band, Edinborough Park.	16 7 p.m., School Board, Edina Community Center.	17 7 p.m., City Council & HRA, Edina City Hall.	18	19 6 p.m., Transportation Commission, Edina City Hall. 7 p.m., Edina High School Holiday Concert, Edina High School.	20	21
22 7 p.m., Good News Big Band, Edinborough Park.	23 No school for Edina Public Schools. 7 p.m., Grandview Community Advisory Team, Edina City Hall.	24 Christmas Eve. City Hall closes at noon. No school for Edina Public Schools.	25 Christmas. City Hall closed. No school for Edina Public Schools.	26 No school for Edina Public Schools. 4 p.m., Arts & Culture Commission, Edina City Hall.	27 No school for Edina Public Schools.	28
29 7 p.m., First John Philip Sousa Memorial Band, Edinborough Park.	30 No school for Edina Public Schools.	31 New Year's Eve. City Hall closes at noon. No school for Edina Public Schools. 6-9 p.m., New Year's Eve Party, Edinborough Park.				

Autumn Calendar Highlights

Other Dates To Remember

- Sept. 12** 7 p.m., Energy & Environment Commission, Edina City Hall.
- Oct. 10** Noon, Brodini Comedy & Magic Act, Edinborough Park.
- Oct. 24** Noon, Bob the Beachcomber, Edinborough Park.
- Nov. 7** Noon, Will Hale & The Tadpole Parade, Edinborough Park.
- Nov. 7** 4 p.m., Public Art Committee, Edina City Hall.
- Nov. 14** 7 p.m. Edina High School fall musical, Edina High School.
- Nov. 21** Noon, Teddy Bear Band, Edinborough Park.
- Dec. 12** Noon, Wonderful World of Woody, Edinborough Park.
- Dec. 12** 7 p.m., South View Middle School 6/7 Grade Play, South View Middle School.
- Dec 19** Noon, Brodini Comedy & Magic Act, Edinborough Park.

Halloween Party

- What:** Attention boys and ghouls! Edinborough Park offers a night of fun, excitement and a little bit of fright. Dress up in your favorite costume and join in for trick-or-treating, games, a comedy show by Brodini and much more. Cost is \$7 per child, ages 12 months to 12 years. Adults are free with a paying child.
- When:** 6-8 p.m. Friday, Oct. 25.
- Where:** Edinborough Park, 7700 York Ave. S.
- Info:** 952-833-9540 or www.EdinboroughPark.com.

Pumpkin Festival

- What:** The 50th & France Business and Professional Association hosts Pumpkin Festival, a fun, family-oriented day filled with festive activities, including trick-or-treating, face painting, balloon twisters, horse-drawn trolley rides, an inflatable bouncy house, magical maze, costume contest and fire truck tours next to Lunds. Games include a cake walk and “pin the face on the pumpkin.” Enjoy warm drinks compliments of Caribou Coffee.
- When:** Saturday, Oct. 26. Trick-or-treating starts at 10 a.m. and all other activities will be held from 11 a.m. to 1 p.m.
- Where:** Downtown Edina, 50th Street and France Avenue.
- Info:** 50th & France Business and Professional Association, 952-922-1524, or www.50thandfrance.com.

A Word From The Mayor

Last month, Marty Scheerer hung up his Edina fireman's hat and jacket when he retired as Fire Chief.

Marty worked for the City for more than three decades. He began working for the City at Braemar Arena in the late 1970s while a junior at Edina West High School. He joined the Fire Department as a volunteer firefighter in 1980 and was hired as a full-time Paramedic/Firefighter in 1989 after receiving his degree as an Intensive Care Emergency Paramedic. He quickly moved up the ranks, becoming a Lieutenant in 1996, Captain in 1998 and Chief in 1999.

Under Marty's leadership, Fire Station No. 1 was rebuilt and Fire Station No. 2 became a 24-hour-a-day operation. Scheerer was known as a leader in innovation and change in Emergency Medical Services, and pushed for Edina to be among the first ambulance services to transmit 12-lead EKGs to hospitals. Edina was also one of the first and is still one of the select few services that perform ultrasound imaging onboard ambulances.

In 2011, the Edina Fire Department's Emergency Medical Services was ranked No. 1 in the nation in sudden cardiac arrest survival, according to a study by the Cardiac Arrest Registry to Enhance Survival (CARES) program. The study, which looked at cardiac arrest survival rates in 2010 among CARES's participants, showed Edina with a 71.4 percent survival rate of cardiac arrests that were witnessed by someone and had a shockable rhythm. That compared with a survival rate of 31.8 percent nationwide. Marty served on numerous advisory boards and was active in several professional associations, including serving the Minnesota State Fire Chiefs Association, of

which he served as president. He always represented Edina well.

In 2012, the City's Fire and Building Inspections departments were merged to become the Fire-Rescue & Inspections Department. Over the course of the last 18 months, Marty worked tirelessly to streamline our inspections process and improve customer service.

Marty's leadership was more than management of people, programs and services. The City benefited greatly from Marty's perspective as a lifelong resident. He always knew who to call and when. He has a winning personality, but more importantly, was the face of calm during major medical emergencies, fires and other disasters. His was the face people wanted to see during those terrible moments of their lives.

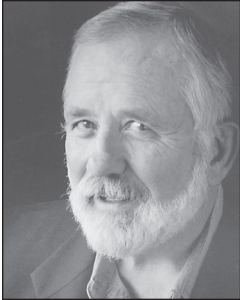
Marty has left big shoes to fill. City Manager Scott Neal has appointed Darrell Todd as Interim Fire Chief and has begun a search process to find Edina's next chief. Marty made his mark on the organization and the community, but we are confident we will find a new leader to take us even further.

We are sure we will cross paths with Marty in his next chapter of life. Until then, best of luck, Marty, and thank you for 35 years of dedicated service to the City of Edina!



James B. Hovland
Mayor

Edina's First Lutheran Church Celebrates 75th Anniversary



By Joe Sullivan
Contributing Writer

Settled in the late-1850s, Edina's Irish Cahill community built a one-room public school, a Catholic church and a grocery store at the "T-crossroads" of what is now West 70th Street and Cahill Road in southwest Edina.

Hugh Darcy was one of the Cahill area's first Irish farmers. His son Moses built a general store across the street from the Cahill School on the north side of the "T-crossroads." Destroyed by fire in 1918, the store was rebuilt on the same site.

By the 1930s, more Lutheran families had settled in the predominantly Irish Cahill neighborhood and, by all reports, felt welcome. Ed and Eleanor Amundson moved their family from Minneapolis to the Cahill area. The Amundsons, who were Lutherans, joined the Wooddale Lutheran Church in southeast St. Louis Park, the closest church for Edina Lutherans.

Oscar Grant and his wife moved to the Cahill community in 1932. They were members of Augustana Lutheran in Minneapolis and often gathered with the Amundsons to sing hymns.

Oscar Grant wrote in his autobiography, "The United Lutheran Synod had a mission branch in St. Louis Park



Courtesy Edina Historical Society

Calvary Lutheran Church's first worship services were held in 1934 in the Cahill School at West 70th Street and Cahill Road. In 1936, Calvary purchased land across 70th Street from the one-room school and in 1938 built this 17-by-30-foot church.

and some of its members lived here in Cahill. We liked the idea of having a Lutheran church in Edina.

"Rev. Dorrance Jensen, minister of the St. Louis Park mission branch, came out here to canvass the Cahill neighborhood and organize a mission. We had our meetings with him in the old schoolhouse, which people said was almost 90 years old then."

Cahill School Is Cahill Branch Of Wooddale Lutheran
Jan. 28, 1934 was a cold Sunday, but 21 children and their teachers gathered in the Cahill one-room school for the first Sunday School session. That evening, 35 adults

attended a first worship service, at 8 p.m. in the same schoolroom.

In 1936, Calvary members purchased a lot directly across 70th Street from the Cahill School for \$25. Weekly worship services were still being held in the schoolhouse until the Calvary members were able to start building Edina's first Lutheran Church.

Oscar Grant, Calvary Lutheran's Only Carpenter

"Since I was the only carpenter in the congregation, the members looked to me to ... build us a little church of our own," Grant said in his autobiography.

"I went to the lumber yard to buy materials. I didn't think they would offer me any credit, but we did have one organization in the church that could do great things. It was the Ladies Aid and its leader was Mrs. Arthur Petersen.

"She got lots of donations from church members, many of whom came and worked on Saturdays. This was the only Protestant church south of 50th Street in Edina, at the time, and we had ... volunteer help from people who were not Lutheran ... I hoped our little church would be one where all Protestant faiths would be welcomed.

"As construction foreman, I asked men of the church if they would help us on Saturdays, and many of them did. When I had to leave town in 1937, and could not continue directing the work, a friend who was a construction superintendent took over. He was paid only enough to

cover his transportation. He was a Baptist and the brickwork was donated by a Methodist."

Rev. Jensen Called To Lutheran Church in North Dakota

In the spring of 1937, Rev.

Dorrance Jensen, pastor at Wooddale Lutheran accepted a call to St. Mark's Lutheran in Grand Forks, N.D. A call was placed in December of that year to Rev. H.J. Motzkus to fill the pulpits of both Wooddale and Calvary churches.

A meeting of 19 people was held on Feb. 28, 1938, for the purpose of organizing a congregation completely separate from Wooddale Lutheran. This was necessary because Calvary wanted to build its own church building. The name of Calvary Evangelical Lutheran Church of Cahill was selected at the meeting.

Calvary Becomes Autonomous Lutheran Church

After four years as a branch of Wooddale Lutheran, Calvary was an independent congregation. Members



On May 9, 1960, Calvary's first worship service was held in the new church at 6817 Antrim Road.

(continued on next page)



This is the sanctuary of the new Calvary Church, which has more than 300 members who will celebrate the church's 75th anniversary this year.

met again on March 18, 1938, to sign documents for the incorporation of the new Calvary Church.

Excavation was also started in March of that year for the basement of the new building. Church volunteers dug the hole for the church basement with the assistance of a team of horses.

Council OKs Sharing New Wooddale Lutheran Pastor

The church council met April 4, 1938, and approved the sharing of Motz-Kus, the new pastor called by Wooddale Lutheran. He was paid \$20 per month by Calvary.

Calvary's first worship service was held May 19, 1938, in the newly completed church basement on 70th Street, with 36 Calvary members in attendance.

On Sept. 1 of that same year, a special meeting of the entire congregation followed the Sunday worship service. It was decided to obtain, through Lutheran Brotherhood, a \$700 loan from the Security National Bank in Hopkins at 5 percent interest to finance construction costs of the church building.

The above-ground superstructure of the new church, including the windows and an arch at the altar to correspond to the arch in the ceiling, was completed in the fall of 1939.

The dedication of the new church was held on Oct. 15, 1939. The building measured 17 feet by 36 feet with seating capacity for 60 people. The service was conducted by Motz-Kus, with an anthem by the Wooddale Lutheran Church Choir, sermons by Jensen, who returned from North Dakota, and Rev. Carl H. Bartsch, President of the Central Conference. Paul L. Lewis served as Student Pastor.

The Council met on Dec. 7, 1939 and accepted the resignation of Motz-Kusz.

Construction Of New Church On Antrim Begins

In 1956, 17 years later, Calvary's congregation had grown and a program was underway to build a new, larger church at 6817 Antrim Road in Edina, about half-mile west of the original church.

Pastors Serving Calvary Lutheran Church – 1954 to 2013

David E. Archie	1954 - 1962
Warren H. Diskerud	1962 - 1966
Barry B. Olsson	1967 - 1971
Gerald C. Eisele	1972 - 1984
Jack Miller	1988 - 1986
Bruce R. Carlson	1986 - 1990
Dr. Jerome F. Larson	1992 - 2004
Robert O. Hall	2004 - Present

Construction of the new church began in August 1959 and the first worship service was held May 9, 1960.

Services are still held at the Church weekly. This year marks the Church's 75th anniversary. A Diamond Jubilee Celebration worship service was held in September.

Information and photos were provided by Calvary Lutheran's Bonnie Rust and Becky Rorke and the Edina Historical Society.

jewelry
home
chocolate

www.StyleByMax.com

Shops at Excelsior & Grand
3826 Grand Way, St. Louis Park, 952.922.8364

CARPET | HARDWOOD
COUNTERTOPS | CABINETS

BRING IN
About Town
FOR

10% OFF
ANY SERVICE!*

44th & France
(952) 920-2010
www.erskineinteriors.com

* If a current in-store promotion is better than 10% off for your project, you can choose that promotion (but not both).

It's Not Only Neighborly ... It's The Law

Signs

The Law: City Code Section 460.03, Subd. 3. Placement. Campaign signs posted in connection with the elections held at times other than as regulated by [Minnesota State Statute] are subject to the following:

1. Maximum Size – six square feet.
2. Maximum Number – one sign for each candidate per frontage.
3. Maximum Duration – 60 days prior to the election until seven days following the election.
4. Location – ... No such sign shall be placed upon the right-of-way without the consent of the abutting property owner

What It Means: Campaign signs posted in connection with the elections held at times other than a state General Election, including this fall's school board election, are subject to the following:

- Maximum size of campaign signs is six square feet.
- One sign is allowed for each candidate per frontage.
- No sign can be located in a place that impedes the view at intersections.
- Signs cannot be attached to trees, rocks or power poles or on parkland and other publicly owned property or bridges/overpasses.

Minnesota State Statute and the Edina City Code regulate the placement of campaign signs on residential properties.

- Signs cannot be placed in the right-of-way without the permission of the property owner.
- Signs should not interfere with regulatory signs and traffic control devices.

For more information, contact City Clerk Debra Mangen, 952-826-0408.

Leaves

The Law: City Code Section 1200.02. Encumbrances or Obstructions. "... No person shall obstruct, encroach upon, encumber, or interfere wholly or partially, with any street, boulevard, alley, sidewalk, easement, park or public ground by placing ... refuse, as defined in Section 705."

What It Means: Keep fallen leaves out of the street to help prevent clogging the storm sewer, which can lead to water runoff, backups and flooding.

In the fall, three street sweepers work eight to 10 hours per day for four to six weeks collecting leaves throughout the City. If residents rake leaves from their yards into the streets, street sweepers will not be able to keep up.

Residents should compost their leaves or contact their refuse hauler for proper disposal.

For a listing of licensed refuse haulers, visit www.EdinaMN.gov/recycling_solid_waste.



7450 France Ave. S.
Suite 270
Edina, MN 55435
952-926-2551
info@pearsonorthodontics.com
www.pearsonorthodontics.com

Celebrating over 50 years of making Edina smile!
Bradley L. Pearson, DDS, MS
Board Certified Specialist in Orthodontics



Sylva Zoraqi
REALTOR®

Edina Realty

Edina Realty
50th & France

Office: 952-924-8739
Cell: 612-710-8081
SylvaZoraqi@edinarealty.com

SylvaZoraqi.edinarealty.com

REALTOR® MULTIPLE LISTING SERVICE **MLS**™

EXCEPTIONAL PROPERTIES

EQUAL HOUSING OPPORTUNITY

**Training
Minnesota's
Top Dancers
Since 1993!
Enroll Today!**

Celebrating 21 Years of Dance Excellence
www.victoriadance.com

VICTORIA DANCE
PRODUCTIONS



VDP offers high energy classes with **PROPER** technique!
TAP | JAZZ | CLASSICAL BALLET | LYRICAL | MODERN | HIP HOP
CREATIVE MOVEMENT | MUSICAL THEATER | DANCE LINE



(952) 835-7497

EDINA'S PREMIERE DANCE STUDIO

7109 AMUNDSON AVE.

VEAP Moves Into Larger, More Functional Space

By Kaylin Martin

"It's not good when your food shelf is the fastest growing business in the area," said Volunteers Enlisted to Assist People (VEAP) Volunteer and Project Lead Ron Have.

He said it seemed that way in the mid-2000s when the economy took a hard hit and many people in the community lost their jobs. By 2006, Have said VEAP was running out of space. Then the economy took another dip in 2008, which increased the unemployment rate and put even more stress on the grassroots organization.

"We are challenged each day to meet greater outcomes, sometimes with fewer resources," said VEAP Executive Director Susan Russell Freeman. "But throughout the ups and the downs – and there have been more downs than ups – VEAP has been able to keep more people in their houses, feed more children and get more people into jobs."

VEAP Food Manager Nathan Rust said there were many challenges in working out of the old 14,000-square-foot, two-level building, with its warehouse on the first floor and food shelf on the second.

"You don't see too many two-level grocery stores for good reason – because it's a big logistical challenge for us to sort and prepare all of the food on the first level and then move it all upstairs in an elevator into a very tiny room for the families to shop," he said.



A rendering of VEAP's entrance to the new facility, which will open this fall.

However, the 800-plus volunteers and 17-person staff managed to make it work for many years, serving nearly 8,000 people from Edina, Bloomington, Richfield and South Minneapolis every month.

In the new space, which is slated to open Oct. 21, VEAP will have the ability to serve even more families with more food every day.

Built in 1953, the 42,000-square-foot space previously occupied by Minnesota Vikings Food Services required a \$2.2 million renovation. Construction started this spring.

To make the move to the larger and newly renovated location possible, VEAP partnered with Hennepin County, leasing space to the Human Services and

Public Health Department in a unique public-private partnership.

“[Hennepin County] had a vision and said ‘you know your community better than we do, you have a culture that we weave into and we want to be a part of it,’” said Russell Freeman, who first approached the County with the idea of the two agencies sharing a space.

“I was very impressed with the whole thing,” she added.

Having the Human Services and Public Health Department onsite will increase efficiency between the two organizations, allowing VEAP to do “what took 30 days, now takes 30 minutes,” said Have.

The “one-stop” service center for VEAP clients will expose current Hennepin County clients to VEAP’s services, too. VEAP Advancement Director Patty Schulz said they hope this will increase visibility for the organization, which currently serves about 47 percent of the low-income population in the non-profit’s service area.

“[Hennepin County] had their perimeters and their requirements, but when we got through all of that, everyone wanted one thing: to serve the people out there better and to make a difference in their lives,” said Russell Freeman. “We’re moving toward a single mission and that’s stability in our community.”

Schulz said the new space also allows VEAP to implement a more efficient needs assessment and follow-

up to provide a higher level of support, which will help clients stabilize their situations; develop nutrition education through samples, recipes, menu planning and food prep in an on-site kitchen; and expand volunteer opportunities.

“I have a very deep passion for people who work very hard and still can’t feed their children, or who have worked hard their whole life and then have to worry about any kind of quality of life,” said Russell Freeman. “That bothers me every day.

“But I’ve always had great faith. I know the community and I know we have plenty of people out there who have the resources to help all the others who need it. My job is just putting them together.”

For more information about VEAP or to donate to the “Our Next Chapter” campaign to fund the new space, contact Schulz at 952-955-8310 or visit www.VEAP.org.

VEAP Gears Up For Holiday Toy Program



This month, Volunteers Enlisted to Assist People (VEAP) staff, volunteers and clients will settle into their new location at 9600 Aldrich Ave. S. in Bloomington. Increased need for VEAP services precipitated the move to a larger building.

VEAP's goal with the new facility is to serve more people and help them move toward long-term stability, faster. Their licensed social workers will be able to see more clients and work with them to stabilize their financial situation. Staff anticipates that the typical five-to seven-day wait for a food pantry appointment will be eliminated and more people will be able to access the food pantry more quickly. They also expect their corps of more than 800 volunteers will enjoy their new responsibilities and a renewed sense of service to their low-income neighbors.

During November and December, preparations for the annual Holiday Toy Program will be under way. This program provides gifts, toys and books for children up to the age of 18. VEAP's Holiday Toy Program is unique in that a store is set up where parents can shop for items

they know their children will enjoy. However, this program is about more than just gifts. Family memories and traditions are built and strengthened when parents are able to select items they know their children will treasure. Ultimately, this contributes to family stability.

This year, approximately 5,000 children will receive gifts through this program.

VEAP is extremely grateful for the generosity the Edina community has shown toward the Holiday Toy Program over the years. Donations of new, unwrapped gifts, toys and books for all ages and \$15 gift cards to local retailers, such as Target and Best Buy for teens are greatly appreciated. In addition, mittens, gloves, scarves and hats and family-friendly board games are also needed. All items should be new and valued at \$10 to \$20.

The Wish List of needed items and a complete list of Community Collection Sites will be available in November on the VEAP website at www.veap.org or by calling 952-888-9616.

To qualify for the Holiday Toy Program, families must live in the Edina, Bloomington, Richfield and South Minneapolis (South of 50th and West of Cedar Avenue) communities and have a demonstrated need for support. Eligible families can call 952-888-9616 for more information.

To learn more about VEAP and how to get involved, visit www.veap.org.

Kolbe Gallery Twin Cities offers inspiration and advice, conveniently located in the greater Minneapolis/St. Paul area.



Visit the Kolbe Gallery Twin Cities showroom, full of Kolbe's artisan-quality wood, aluminum clad, and vinyl window & door displays, and other building products. Our experienced staff can assist with measurement, product & parts identification, and ordering. Kolbe Certified Technicians are on staff to help with parts replacement on existing Kolbe windows & doors. Stop in today to See the *Difference Quality Makes®* with Kolbe!

KOLBE
Gallery
WINDOWS & DOORS

7545 Washington Avenue | Edina, MN 55439

www.kolbegallerytwincities.com

866.460.4403

What's Barking In Edina Dog Parks?

Photo by Katie Lofrano



Bruce Aamoth (left) with his dog RagMuffin, Maggie Trenkmann with her dog Henri, and Swede Olson with his dog Corgi enjoy a beautiful summer day at the Van Valkenburg Park off-leash area.

By Katie Lofrano

Running and playing in a large area of green grass without a leash is nothing less than the icing on the cake for the dogs of Edina's Bruce Aamoth and Swede Olson.

Living without a yard in which to run and play can be a nightmare for city dogs. So, the Edina Parks & Recreation Department recently expanded its park system to fulfill the dreams of dogs with another dog park. Now, there are two different park locations in Edina where residents can bring their dogs to roam about without a leash.

Aamoth and Olson met at Van Valkenburg Park years ago and continue to meet at the park at the same time

each day. Many other residents choose to bring their dogs during certain daytime hours to ensure both they and their dogs get to see friends.

"The parks let our dogs play and run in a safe area while residents get to socialize with one another as well," said Aamoth.

Swede loves that Van Valkenburg Park users are eclectic. He claims, "You get CEOs of huge companies, retired residents, residents from France to people who are unemployed. Everyone is incredibly friendly."

Dog parks are becoming popular all over the metropolitan area. Currently, there are seven dog parks in Minneapolis, two in St. Louis Park, one in Richfield, one in Bloomington and one in Burnsville.

Van Valkenburg dog park has been open in Edina for five years. Strachauer Park's off-leash area opened earlier this year inside the hockey rink due to the popularity of Van Valkenburg and to offer a dog park on the east side of town. Assistant Parks & Recreation Director Susan Faus said there are a few hockey rinks in Edina that are not used during the summer months and it only made sense to try putting one of them to use and see how residents like it as an off-leash area.

Faus said the two off-leash areas will be evaluated on use and issues that arise. Based on those findings, more off-leash areas may be added in the future.

"Van Valkenburg has lots of green grass compared to Minneapolis dog parks. In the winter, there is gravel put

down on the walkway for traction which is really nice,” explained Maggie Trenkmann, Edina resident and dog park user.

In both park locations, Van Valkenburg and Strachauer, dogs are required to wear a special off-leash area collar. These collars – \$25 for residents and \$50 for non-residents – can be purchased at Edina City Hall, 4801 W. 50th St., or online. The collar may be used in both locations, and is valid for the calendar year.

The Edina Police Department’s Animal Control Officer monitors both locations, ensuring proper use of the parks and making sure residents are safe.

No aggressive dogs are allowed in the park, nor are glass containers, children under the age of 6, female dogs in season, unauthorized motorized equipment or vehicles and bicycles. Smoking is prohibited.


Van Valkenburg Park, 4935 Lincoln Drive, is open from 6 a.m. until 10 p.m. Strachauer Park Hockey Rink, 6200 Beard Ave., is available as an off-leash area from 7 a.m. until 9 p.m. from April to October.

Faus encourages those who have suggestions to improve the dog parks to email her at sfaus@EdinaMN.gov.




Creating Beautiful Smiles for 30 Years!
Mark J. Johnson, DDS
Cleaning & Prevention, Cosmetic Dentistry, Periodontal Disease Treatment & Restoration
Schedule an appointment
www.MarkJohnsondds.com or call 952-941-1911
**Mention this ad for a complimentary initial exam*

6600 France Ave.
Suite 310


Scuba Center
MINNEAPOLIS/EAGAN

**SNORKELING EQUIPMENT
and SCUBA CERTIFICATION
for your
TROPICAL
ADVENTURES**



5015 Penn Avenue S. Minneapolis
612-925-4818 www.scubacenter.com

TOMPERSON

Morningside Becomes First City-Recognized Neighborhood

By Kaylin Martin

Since 2003, the Morningside Neighborhood Association has kept neighbors in Morningside connected and informed about issues of interest to the area, which in turn has created a stronger bond between residents. Now Morningside has the distinction of being Edina's first recognized neighborhood association.

"We believe recognition will improve communication between the City and neighborhood and give Morningside residents greater opportunities to be informed and to participate in the City decisions that affect them," said Jennifer Janovy, a steering committee member of the Morningside Neighborhood Association.

Morningside's recognition follows action by the City Council to approve neighborhood names and boundaries and a related policy on neighborhood associations. Now that a policy is in place, City staff hope that more neighborhoods will follow Morningside's lead.

"City-recognized neighborhoods serve as an additional communication channel between the City and neighborhoods to ensure that residents are informed and have the opportunity to provide input on policies and projects that affect their area. In today's busy world, residents can easily miss a press release or public notice, but they might notice a neighborhood association post or flyer," said Assistant City Manager Karen Kurt. "It is also an opportunity for us to learn from residents about what important issues might exist in a specific geographic area."



Photo by Kaylin Martin

Earlier this year, Morningside became the first City-recognized neighborhood association in Edina.

Neighborhood associations can have benefits beyond spreading the word. "Research has been done highlighting the benefits of social capital at the neighborhood level," said Hope Melton, who led the City's Neighborhood Identification Steering Committee that worked to identify names and boundaries of Edina neighborhoods. "Neighborhoods with high levels of interconnectedness, where people know each other and work together, produce a higher level of health and safety."

Assistant City Manager Karen Kurt said it was simple for the Morningside Association to become a recognized neighborhood, because the group only had to revise a few bylaws. She said the Morningside Neighborhood Association already met all of the other criteria: hold an annual meeting, have a basic set of bylaws, elect

officers, ensure membership is available to everyone within neighborhood boundaries and don't charge dues. "Beyond the basics, neighborhoods can choose how active they want to become based on their members," said Kurt.


While Morningside has been organized for several years, other neighborhoods are taking the first steps toward forming associations. City staff are currently working with residents in The Heights and Concord neighborhoods to conduct informational meetings.

"With today's technology, it is easier than ever to get organized and communicate within the neighborhood," noted City Manager Intern Annie Johnson, a former St. Paul neighborhood coordinator. "We just need a couple of residents interested in getting the ball rolling."

To organize, the City recommends that an informational meeting take place prior to the organizing meeting, at which an official vote would take place. City staff coordinates an initial mailing to area residents and businesses to notify them of the organizing effort.

"This is a new concept for Edina – we are trying to share the best practices we have learned from within and outside the community to support our organizers," said Kurt, "but to some degree, we will all be learning together."

For more information, or to organize or seek recognition for a neighborhood association, contact Johnson, ajohnson@EdinaMN.gov or 952-826-0429, or visit www.EdinaMN.gov/Neighborhoods.



DO YOU
have insurance for
sewer back-ups?
Check your policy today!

Coverage for backups of sewers and basement drains is available, but not always included in a basic homeowner's insurance policy.

In addition, insurance companies that do offer the protection have varying amounts of coverage.

Check your homeowner's insurance policy to see if you have coverage for backups.

If you do not have coverage, consider adding to your policy because in most cases the City's insurance will not cover your damages in the event of an incident.

Edina Welcomes New Southdale Transit Center

By Jordan Gilgenbach

Lynn Deines takes the 538 to work every day from Southdale Center. For Deines and others riding the bus from Southdale, waiting for the bus this winter should be a little brighter and warmer.

"I'm used to dressing warmly," Deines said, who waits 10 to 20 minutes twice daily for her bus. "The shelter here is usually full, so I will definitely be waiting in [the new transit center] for my bus."

A new transit center at Southdale Center will soon open its doors and greet Metro Transit riders with new amenities. The change follows a \$19.1 million renovation of Southdale Center and the start of construction of One Southdale Place, a luxury apartment complex being built in the southeast corner of Southdale Center, where the former Park & Ride was located.

"Edina has been very supportive of transit," said Maurice Roers, Manager of Facilities Planning at Metro Transit. "The City is wanting to make transit a more viable option for more residents. This follows along that line where we are trying to improve the amenities to better serve the customers in the area."

Construction of the new \$850,000 transit center began earlier this year and opens to riders in October. The new facility will be located in the northeast corner of Southdale Center, near the intersection of York Avenue and 66th Street.

The new transit center is a free-standing structure with assigned gates for routes and real-time bus schedules. The shelter will also be climate-controlled, giving patiently waiting riders relief from winter's brash, cold winds and summer scorchers. The Park & Ride can accommodate 130 vehicles and has spaces designated for electric vehicle charging.

"Southdale Center is pleased to work with the City of Edina and Metro Transit in order to help provide quality transportation opportunities to the community and our shoppers," said Ben Martin, Manager of Southdale Center. "The City of Edina has been a great partner and supporter of Simon's redevelopment efforts at historic Southdale."

"This is a good move for us," Roers said, "because we now have a permanent home at Southdale Center."

According to Metro Transit, Southdale was the site of one of the area's first Park & Rides in 1957. This is Park & Ride's fourth move on the site, originally located in the northeast quadrant before moving to both the southeast and southwest corners.

The facility will also practice sustainable operations, with the addition of solar panels to supply the building with power, improved stormwater management and a rain garden to capture rainwater from the roof.

Currently, seven Metro Transit lines serve Southdale Center, taking riders to destinations such as downtown Minneapolis, the University of Minnesota and the Mall



A new, permanent transit center opens in October at Southdale Center. The new facility is located in the northeast corner of the property, near jcp.

of America. According to Roers, on average, about 800 people board a bus at Southdale Center every day.

"We anticipate some increase in ridership," Roers said, "and we do hope that, because it is a nicer facility, people will feel more comfortable and that it will support better ridership."

"It's one of our larger stops in our network. That's why we are interested in making this investment."

The City secured the land and a permanent transit easement from Simon Properties, which owns Southdale Center, as part of a redevelopment agreement in 2012. In February, the transit easement was delegated to the Metropolitan Council to build a transit center and Park & Ride.

"Mass transit access is a healthy element of a thriving business district, so this easement is essential," said the

City's Economic Development Manager, Bill Neuendorf. "Without a place to call home, it's confusing for riders when the pick-up location moves frequently, which often results in lost ridership. This new transit center is reliable, safe and convenient, and solidifies that transit will always be a service here."

"The City securing this easement really gave us the confidence to move forward," Roers said. "Without it, the project would have still happened, but I think it would have had a much more tenuous tenure, and we would have needed to back off our investment a little because we wouldn't really know how long we were going to be there."

Roers said that while Metro Transit doesn't anticipate adding additional bus lines, it has the option to do so in the future.

"The routes [currently serving Southdale Center] are fairly stable, but we don't really anticipate an increase or decrease in number of routes," Roers said. "That being said, another advantage of the facility is that we do have the capacity to grow our service and add new lines if feasible."

The facility opens for riders later this month, though not all work will be complete. Roers said the finishing touches, like landscaping, should be complete soon after.

The Southdale Transit Center services bus lines 6, 515, 537, 538, 578, 579 and 684. For more information, visit www.metrotransit.org.



Strengthening Our Community

Edina Community Foundation: Challenging Our Community



By Dick Crockett
Executive Director

The Edina Challenge: At the Connecting With Kids Leadership Breakfast in February 2012, I proposed an Edina Challenge to Edina residents and organizations: that they join together to ensure that Edina youth living in poverty could

more fully participate in the community, educational and recreational programs that lead to success in adult life. During the year that followed, we met with many of the key grant makers and service providers in the community and agreed with them that the goal should be expanded to include the approximately 750 youth who qualify for Free and Reduced Lunch.

Since December 2012, Edina resident Mamie Segall has been working on behalf of the Edina Community Foundation (ECF) as the volunteer chair of an Edina Challenge Team with some 14 other organizations to develop a collaborative, community effort to meet the Edina Challenge goals. This Team has included representatives of the following organizations:

City of Edina Parks & Recreation, Edina Federated Women's Club, Connecting With Kids, Edina Give and



Submitted Photo

Mamie Segall

Go, Edina Community Lutheran Church, Oasis for Youth, Shepherd of the Hills Lutheran Church Questscope / One2One, Edina Education Fund, Southdale YMCA, Edina Morningside Rotary Club, Edina High School STRIVE Program and Youth Serving Youth, Edina Public Schools Community Education Services and Edina Resource Center.

The Team began by assessing the current state and key gaps in services to financially challenged youth, leading to the conclusion that the five priorities for Edina Challenge programs to close gaps in services to Free and Reduced Lunch participants were extracurricular engagement, housing, mentoring, transportation and tutoring.

For the last three months, the Team has been reviewing proposals for solutions to meet these priority needs and will be deciding in October which proposals to endorse for community support and which to also recommend for financial support by ECF.

Another Edina Challenge: During its deliberations and conversations with other community members, the Team identified another level of the Edina Challenge: convincing prospective Edina donors and grant makers that there are in fact youth living in our community whose community and educational lives are compromised by serious financial hardship. For example, the Team has learned of kids who live in cars or sleep on friends' couches, other kids who come to school on Monday mornings without having eaten a meal since their Friday school lunch, and many kids who are not

able to pay the required fees or obtain necessary transportation to participate in community programs or extracurricular activities. While we have donors and organizations who give to relieve this kind of financial hardship in underdeveloped countries, they are less likely to understand that level of need here in Edina.



Marsha Buchok

New Development Officer: With all this in mind, ECF is especially pleased to announce the appointment of long-time Edina resident Marsha Buchok as its Development Officer, effective Oct. 1. Buchok has a master's degree in Community Education Administration from the University of Minnesota, and she retired in June from the Edina Public Schools after long and productive service to the community as Coordinator of Adult Programs. She brings to ECF a vast network of contacts in Edina and strong interpersonal and communication skills augmented by great energy, enthusiasm, self-motivation and a sense of humor.

Buchok will be an important asset to ECF as we strive to increase our community support generally and also specifically for programs recommended for funding by the Edina Challenge Team. She and I, together with Team members and the ECF Board, will challenge other Edina residents and organizations to meet the Edina Challenge by helping disadvantaged Edina youth so they may

take advantage of all Edina has to offer and develop as productive, healthy adults.

Questions about current or planned gifts to the Foundation, the Edina Challenge or any of its other programs may be addressed to Crockett at 952-833-9573 or edfoundation@EdinaMN.gov. Additional information about the Foundation and links to other articles about the Foundation may be found at its website, www.edinacommunityfoundation.org.

Getting Everything You Deserve from Your **Fitness** Program?



You Don't Have to Lose **Muscle & Strength** As You Age

ARETE'
HEALTHFIT
952-918-9000

- Our E.A.S.E Training Principles Have Helped 1000s of clients. Discover them at www.aretethealthfit.com
- Access to Advanced Technology, such as our Bod Pod, eliminates the guesswork that normally wastes time.

Mention this Ad for a 10% Discount on all Services

Babbling Brook, Picturesque Pond Proposed For Promenade

By David Katz
Contributing Writer

Minnesota might already be home to 10,000 lakes, but as far as urban designer Arijis Pakalns is concerned, there's room for one more.

Pakalns, of renowned engineering/construction firm URS Inc., worked closely with the City of Edina in 2006 when the community first set out to shape the unassuming ribbon of City-owned land north of Centennial Lakes Park into something much more. Today, that 80-foot-wide greenway – known throughout the metro simply as “the Promenade” – is one of the Twin Cities’ premier urban escapes, boasting almost a mile of bicycle and pedestrian paths, extensive landscaping and nearly a dozen public art installations.

In its current state, the Promenade mirrors closely the original concept designs Pakalns and URS first presented to the City Council more than seven years ago, but with one notable exception.

“The original concept actually envisioned a sizable water feature, with a number of water-related attractions,” Pakalns said.

Such an addition makes sense. As many astute Promenade walkers are likely to have noticed, the central portion of the corridor, which runs parallel to France Avenue and behind the Byerly’s supermarket and Macy’s Southdale Furniture Gallery, slopes naturally to the south toward Centennial Lakes Park. This, together with the unique shape of the plot, creates near-perfect conditions for an artificial brook and pond.

“Our original intent with the Promenade was to create a thematic link to Centennial Lakes,” Pakalns said.

“This idea was well received,” added Wayne Houle, Director of Engineering for the City of Edina. However, for a variety of reasons, the complete vision for the Promenade could not be immediately realized.

The City received the perfect opportunity to revisit the water feature question when, last year, Lund Food Holdings approached City officials with preliminary but exciting redevelopment plans for its France Avenue Byerly’s location.

“We have a recurring cadence of investing in our stores to keep them fresh and innovative,” said company spokesperson Aaron Sorenson. In Edina, that meant tapping into Byerly’s most unique asset – proximity and access to the Promenade.

Currently the connection is underutilized, with the central stretch of the Promenade bordering the store’s loading docks and part of its parking lot. Under the reimagined plan, slated for completion in 2015, “the site will become a vibrant mixed-use development” featuring not only a new and better Byerly’s, but several apartment complexes with more than 30,000 square feet of ground-level commercial space, Sorenson explained.

Once these plans come to fruition, there will be more feet on the Promenade paths – and more eyes on its grounds – than ever before, Houle noted. In conjunction with the Byerly’s construction, then, “the City, in what we’re calling ‘Phase IV’ work on the site, is replacing the last of the Promenade’s temporary walking paths with

permanent ones made from more durable materials,” Houle said.

Also as part of Phase IV, the Promenade will finally get its signature water feature. More accurately, this addition is proposed to be composed of three separate but interconnected attractions: a lined pond, a babbling brook and two new water art installations at either end of the circulating system.

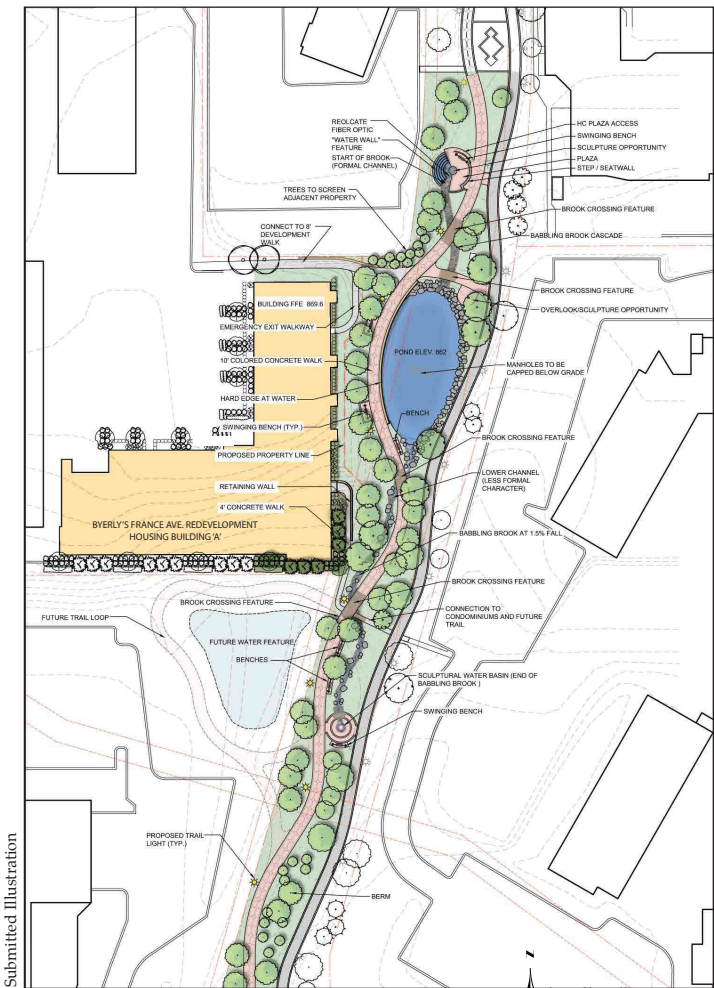
“Water from Centennial Lakes Park will be pumped to supply the brook source at the north end of this system,” Houle explained. Rain water collected on the roofs of the Byerly’s residential complexes will also be channeled to augment this flow.

This water will issue from a sculpture or fountain, the exact design of which is yet to be selected, before flowing through an ‘upper channel’ hemmed straight by stone or concrete banks. The brook will feed into the new pond, which will be located between and bordered by the Promenade’s main pedestrian and bike paths.

The brook will reemerge at the pond’s south end and, according to URS concept sketches, flow down a more naturalistic and meandering channel before finally emptying into a sculptural water basin.

Due to a fortuitous downward slant in the terrain, this ‘lower channel’ is likely to be dotted by one or more small cascading falls. Coupled with the Byerly’s redevelopment, “water, especially fountains and a flowing stream, should add motion and liveliness to the Promenade environment,” Pakalns said.

(continued on next page)



Submitted Illustration

A lined pond, a babbling brook and two new water art installations at either end of the circulating system are among the newly proposed amenities on the Edina Promenade.

Construction is likely to begin in summer 2014, once the Edina Planning Commission and City Council give final approval and after a winter window for contractor bidding.

As exciting as the prospect of adding such a varied and beautiful water feature to the Promenade may be, no less exciting are the implications Phase IV construction has for two long-term initiatives particularly meaningful to many Edina residents: environmental sustainability and public art.

In addition to being an aesthetic asset, the pond in particular will be a sustainability boon.

"The [pond's circulation system will] continue underground, with perforated pipes installed to slowly replenish groundwater tapped by area wells," Houle explained.

Monitoring and maintaining groundwater levels is particularly important in heavily paved areas like the Southdale area, where so much rain water is prevented from soaking directly into the ground.

Easier to appreciate is the fact that Phase IV construction will also increase the Promenade's already considerable capacity to display public art.

"Right now, there are 11 permanent and rotating art pieces out for viewing on the Promenade," noted Barbara La Valleur, chair of the Edina Public Art Committee.

In addition to the fixtures at either end of the new brook, which promise to be art pieces of note in their own right, "the plans allow more space for art ... a total of nine slots for rotating pieces, versus the current eight," LaValleur said.

"Water is inspiring ... We've had artists in the past ask us if we have the capacity to host a sculpture in water. At the time, we had to say 'No.' Now, we will be able to offer that to someone."

In this same vein, Houle is confident that residents and visitors of all stripes will appreciate and draw inspiration from the finished Promenade.

"This is definitely going to bring good creative energy to the greater Southdale area and the City of Edina," he said.

For more information, visit www.EdinaMN.gov.

**2012 Minnesota Business Ethics Award winner!**

3 CONVENIENT EDINA LOCATIONS

 On Vernon Ave, Across from Jerry's Foods 952-929-3115	 On 54th Street & France Ave. 952-926-5110	 On 70th Street, 1/2 mile West of Hwy 100 952-944-1119
--	---	---

Complete car care you can TRUST!



SYLVESTRE 
DESIGN & REMODELING

Remodeling Edina's homes for over 40 years.

612.861.0188 

www.SylvestreConstruction.com
License #1428



Cosmetic, Family & Sports Dentistry, PA

*Dentistry with eye on today
& a vision for tomorrow...!*

DR. DOUGLAS L. LAMBERT, DDS
DR. SANDRA HOUCK, DDS

Call us at 952-922-9119
www.yoursmiledocs.com

ROYAL CREDIT UNION

It's Simply Better

Reward Points for Travel, Gift Cards & More
No-Fee Balance Transfer for Introductory 90 Days

7.75 % APR*



*Annual Percentage Rate (APR) is variable and may be adjusted quarterly based on Prime rate. No annual charge. Cash Advance charge is 3% of transaction amount with \$10 minimum, \$75 maximum. Foreign Transaction charge is up to 2%. After 90 days, Balance Transfer charge is 3% of transaction amount with \$10 minimum, \$75 maximum. Visit www.rcu.org for details.



Sports Enthusiast Catches New Position With Edina Parks & Recreation

By Emilie Kastner

Maybe it was a cool dip in the pool on a hot day that inspired him. Perhaps it was the sense of accomplishment after scoring a game-winning goal. Whatever his inspiration, it led Eric Boettcher to join the Edina Parks & Recreation Department May 20 as its newest Recreation Supervisor.

Whether it was soccer, downhill skiing, waterskiing, hunting, fishing, golfing or camping, sports have always been a passion for Boettcher. Hired to fill the vacancy left by Recreation Supervisor Donna Tilsner's transition to head the Edina Senior Center operations, Boettcher is responsible for athletic programming and will serve as staff liaison to almost all of Edina's athletic associations.

"We are thrilled to have him," said Parks & Recreation Director Ann Kattreh. "He was a great hire! He has a tremendous amount of experience; he's athletic- and customer service-oriented; and he has a lot of great ideas for programs, scheduling and associations."

The Wisconsin-native spent the last nine years as Recreation Supervisor for the City of Roseville. Prior to that, Boettcher worked as Recreation Manager for six years at the City of Northfield after he graduated from the University of Minnesota in 1998 with a bachelor's degree in parks, recreation and leisure studies. He was a pool manager through college and also went on to coach basketball.



Photo by Michael Braun

Eric Boettcher is Edina's new Recreation Supervisor.

"I decided it was time for a change and new challenges," said Boettcher, whose job in Roseville held similar requirements – including scheduling and programming for adult athletics, facilities and youth athletics. "My passion is working with athletic associations."

With 14 athletic associations in Edina, he said his biggest challenge thus far was coordinating athletics when the late and soggy spring resulted in many cancellations. Since he's new, he's also still learning the intricacies of the community and its athletic fields.

"I can't always just make a phone call," he said, smiling. "I sometimes have to call someone to find out who to call."

He's been charged with creating playoff and league schedules and assigning field space for teams. He also

works with the school district to provide cohesion among the available sports fields to grant athletic associations the necessary access to school facilities.

Boettcher is skilled at networking and that has helped him overcome challenges.

"He's done a nice job creating new programs," said Kattreh. "He's very well-connected in the Minnesota Recreation and Park Association."

In fact, prior to working in Edina, Boettcher was acquainted with a few Edina Parks & Recreation Department and Braemar Arena staff members from professional associations and past involvements.

"I'm an outgoing person," said Boettcher. "My passion is working with sports and the people involved in it – it's fun. And all the people I've met through that have been great to work with so far."

"We would like to continue to improve the relationship between City staff and associations," said Kattreh, "and also the relationship between the athletic associations to better share ideas and resources. We look forward to new programming ideas and hope to be able to offer more adult sports programming than we have in the past."

Updating software is also a goal of the department – and something in which Boettcher will be involved.

"My co-workers, and association boards and presidents have high expectations," said Boettcher. "Everyone I work

with is really passionate about what they do – and they give you a lot of support."

"He's got a great personality and sense of humor," said Kattreh. "He's adding a lot to our team."

For more information on Edina Parks & Recreation, call 952-826-0367 or visit www.EdinaParks.com. To contact Boettcher, call 952-826-0432 or write to eboettcher@EdinaMN.gov.



Westgate Pet Clinic

612-925-1121
4345 France Ave S
Minneapolis, MN 55410
westgatepetclinicmn.com



Hours

M-Th 7am-7pm
Friday 7am-6pm
Saturday 8am-5pm



- Well Pet Visits
- General Medicine & Surgery
- Classes for Puppies & Kittens
- Animal Acupuncture
- Canine Rehabilitation Therapy
- Rabbits, Rodents & Guinea Pigs

Caring for your pets since 1973

Technology Enhances Voting Process

By Katie Lofrano

From the Motorola Razr to the Galaxy and the Blackberry to the iPhone, people are constantly upgrading devices and the technology that powers them.

With the world advancing technologically day after day, Hennepin County was due for an upgrade of its voting equipment, which has been in use since 1999. Without parts being readily available to repair the aging system, it was essential that Hennepin County jump onto the new technology bandwagon. The new equipment was purchased earlier this year.

Secretary of State Mark Richie confirms that “this is the newest model of the same equipment Edina has been using for decades. It will seem no different to the voters themselves and it will make it easier for those who are administrating our elections.”

Edina residents will use the new election equipment for the first time Nov. 5. Voters will still cast their votes on paper ballots and then insert them into ES&S’ DS200 ballot counter. It is hoped that the advanced new voting equipment will enhance the voting process.

The ES&S’ DS200 ballot counter combines a paper-based balloting system with a digital environment. Some of the new technology features include: transmitting votes directly from the voting place; processing a variety of ballot sizes; and being lightweight, compact and easy to set up in the voting area. The ballot counter uses mark recognition which determines a specific candidate. The



Edina’s new voting equipment will be used by the public on Election Day, Nov. 5. The new technology offers a 12-inch LCD touch screen for easy use.

system also improves voter communication with a 12-inch LCD touch screen that delivers messages necessary to voters. The equipment also has the capacity to support multiple languages.

Edina will lease 25 ballot counters from Hennepin County, which purchased the equipment so there are no capital costs to the City. The lease will cost the City of Edina \$4,680 per year for the equipment. Edina will be responsible for all maintenance, storage and insurance on the equipment.

“We are hoping that the reliability of the equipment is improved, and we are excited to put the new equipment into service and see how it will serve our citizens,” said City Clerk Debra Mangen.

The old equipment was well used. "The equipment being replaced was deployed for seven Primary Elections, seven General Elections, six School District elections and one Special Election. Based on the total voting from each of those elections, the counters have had approximately 305,805 ballots passed through them. This does not count the ballots we used when testing the equipment before each deployment," said Mangen.

Richie explains that, "Edina has one of the highest turn-outs in the region of the state. Edina excels in the amount of engagement in elections. The new equipment will make it easier for administration to continue providing excellent service."

For Head Election Judge Colleen Crew, this change is no big deal. She has seen three generations of voting technology come through the City of Edina. "I have seen the new machine and it will be absolutely fantastic. With the new LCD screen, people will be able to see their ballot has been accepted by the ballot tabulator and they have completed voting," Crew said. "We used to have to manually send results after voting ended. Now, the machine has the ability to send results directly. These results will be sent automatically after the polls close, and we won't have to worry about having a signal."

AutoMARKs, which assists those with disabilities to vote independently, were purchased in 2002 and will not be upgraded at this time, according to Mangen.

For citizens interested in seeing the new equipment operate, equipment demonstrations are available at the

City Clerk's Office located in Edina City Hall, 4801 W. 50th St., through Nov. 3 during regular business hours.

On Election Day, directions will be provided by the head election judges who have been trained on the new voting equipment in each polling place.

For more information, contact Mangen at 952-826-0408 or Deputy City Clerk Jane Timm at 952-826-0409.

Vous voulez apprendre le Français

Do you want to speak French

French Tutoring

Contact **Cheryl** at

952.832.5733

chelsmith48@yahoo.com

Edina, MN



City Discounts Home Energy Squad Visits For Residents



Photo by Michael Braun

More than 225 Edina households have already completed a Home Energy Squad visit and on average they reduced their household energy use by 7 percent.

As we notice the days getting shorter, the leaves changing colors and the cold air sweeping in, it's time to think about getting ready for the winter and making your home more comfortable. Before you bring out your stocking caps and sweaters, let the Home Energy Squad get your house ready.

To help get your home ready for winter, the Edina Energy & Environment Commission is making Home Energy Squad Enhanced visits available to Edina residents at a discounted rate of \$50. During the Home Energy Squad Enhanced visit, a team of trained professionals will help you identify opportunities to make your home more comfortable while lowering your energy costs. Not only will they leave you with a road map for future

improvements, they'll also install recommended materials to help you start saving right away.

Your team of energy consultants will:

- Install materials such as door weather stripping, water heater blanket, programmable thermostat, compact fluorescent lights (CFLs), high-efficiency showerheads and faucet aerators.
- Perform a blower door test to measure your home for air leaks.
- Complete an insulation inspection.
- Perform safety checks on your home's heating system and water heater.
- Identify additional ways to save energy in the home.
- Help with next steps.
- Provide you access to 0 percent energy financing and utility rebates.

"We want to help homeowners improve the efficiency of their homes and save money on utility bills; a Home Energy Squad Enhanced visit will do just that," said Bill Sierks, Chair of the Energy & Environment Commission.

More than 225 Edina households have already completed a Home Energy Squad visit and on average they reduced their household energy use by 7 percent. Homes that have made energy improvements such as insulation, air sealing and heating system upgrades are saving even more.

"I didn't know what to expect and I was pleasantly surprised," said Rob Lund, Edina homeowner. "They


replaced my light bulbs with CFLs and even had dimmable ones. They also replaced our faucet aerators, which is something I hadn't thought of. I was intrigued by the blower door test. They said our house is on the tighter side, which was good to hear. I was very pleased with the visit. We got more than our money's worth just in light bulbs."

Edina resident Paul Thompson also had a positive home visit experience.

"Not only did I get a programmable thermostat installed that I've wanted to do for over 10 years, but I loved the personal touch of walking through my home with me to assess places where simple improvements could be made to save money and energy," he said. "The team also suggested bigger projects that I could do in the future."

Home Energy Squad Enhanced is provided by CenterPoint Energy and Xcel Energy in partnership with the Center for Energy and Environment, a local nonprofit that has been helping Minnesota residents reduce their energy use for more than 30 years.

Discount funds are limited and will be available on a first-come, first-served basis. To learn more about a Home Energy Squad Enhanced visit and to schedule your visit, call 612-335-5874 or email bgreeninger@mncee.org.



Child | Adolescent | Adult
Psychotherapy | Psychoanalysis

Jan Search, MSW, LICSW
jansearchcounseling.com

952.922.2888
c 612.849.5059

6800 France Avenue S | Suite 560
Edina, MN 55435

EDINA CARE & REHABILITATION CENTER

Your community of caring in Edina for 40 years.



From our charming setting to our top-rated staff, we are our community's dedicated provider of quality services for people who need physical, speech or occupational therapies, or more intensive help with long-term health care or memory care.

Please call to arrange a visit or to ask questions. After all, that's what neighbors are for.

 **Volunteers of America®**

THIS IS WHY WE DO WHAT WE DO.™

www.EdinaCareandRehab.org • 952.925.8500
6200 Xerxes Avenue South • Edina, MN 55432

Third-Annual Edina Film Festival On Screen Nov. 7-9

By Heather Randall King
Contributing Writer

Crisp fall temperatures and early sunsets have arrived, kicking off an enticing movie-going season. If you haven't seen any "winners" lately, you'll be encouraged by our creative, compelling "coming attractions."

The third-annual Edina Film Festival is returning Nov. 7-9 at Landmark Theaters Edina Cinema at 50th & France for three consecutive evenings of entertainment, featuring a sensational scope of talents and titles. This highly anticipated event is another fine facet of Edina's proud history of supporting and celebrating the arts.

Proceeds benefit Edina Art Center programs, classes, camps and workshops for all ages. Michael Frey, who became the Art Center's General Manager during the Festival's second year, describes his experience to date, saying, "I'm very impressed with the quality and content of the films and have been quite moved by two of last year's selections, specifically. I appreciate the Film Festival Committees' efforts to enhance the community and support the Edina Art Center."

John Swon, Festival Director, ignited the spark for this event and has led the organization and planning from its inception. "Thanks to generosity of Festival sponsors from business and private sectors, plus assistance of the Edina Community Foundation, we are able to donate all ticket sale proceeds to the Edina Art Center," he explained. "We are very proud of this partnership and are grateful for the growing number of enthusiastic supporters who add vibrancy to the event."

Just blocks from home, metro-area movie fans will be treated to an eclectic array of films, some of which have played at major festivals in Telluride, Sundance, Toronto, New York, L.A. and throughout Europe. Selections featured there and here are chosen because they are among the finest independent films currently in circulation.

"The Film Festival Committee is alert for diverse discoveries which illuminate the human experience in new ways," said Mickie Turk, Film Festival Steering Committee member who spearheads the research. "We are especially interested in presenting Minnesota-made movies – there is so much talent here! – and documentaries and narratives. We watch for well-crafted, fast-paced thrillers to keep audiences in suspense and humorous productions to lift spirits. Quality and variety are cornerstones of the event."

To be considered for screening, each film must be new and noteworthy or among the latest restored, re-mastered, re-released award-winning movies from the past. Those who flocked last year for "My Man Godfrey" will want to return this year for "My Favorite Brunette," the 1947 romantic comedy starring Bob Hope, Dorothy Lamour and Peter Lorre. Bob DeFlores, local film archivist/historian, will return this year with engaging commentary



John Swon

about the movie, featured actors and insider tales of Hollywood in “the good old days.”

One of this year’s feature films, “The Fabulous Ice Age” invites viewers into the world of theatrical skating and was produced/directed by Minneapolis resident and renowned photographer Keri Pickett. It seems tailor-made for a community where “ice time” is “prime time,” where Edina figure skaters and hockey players bring home “the gold” year after year. A century of never-before-shared footage illustrates how this graceful art dominated live entertainment for decades. Famed skaters like Sonja Henie and Charlotte of Berlin (as she was known) along with producers and entrepreneurs share captivating photos and other memorabilia of glittering extravaganzas like Holiday on Ice and Ice Follies. Charlotte, an innovator on ice, is credited with inventing “the spiral,” copied by legions of other skaters in their dazzling routines.

Another cutting-edge screening, “Nuala - A Life and Death” recounts remarkable journey and bountiful talent of Irish-born Nuala O’Faolain (1940-2008), author of New York Times best-selling memoir “Are You Somebody?” and the novel “I Dream of You.” Her amazing intellect and independent thinking are showcased in frank interviews hosted by Ireland’s radio personality Marian Finucane. Viewers have elevated the film to “best documentary” status – memorable long after the lights go up.

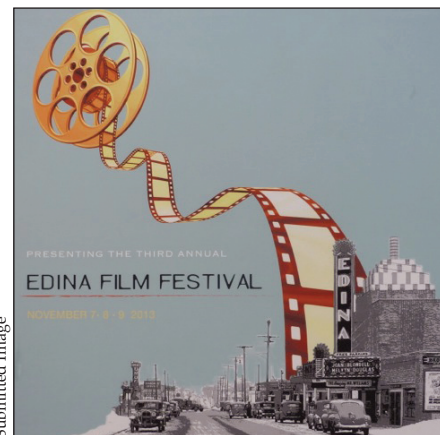
A change of pace from full-length features will be snappy “shorts” which open the window to breezy, abbreviated glimpses into some of the most creative minds in today’s

movie-making world. In 30 minutes or less, audiences will speed through many time zones and mood swings – serious, mysterious, fanciful and inspirational.

An innovative example is “Far,” directed by Minneapolis native Brian Crewe. Crewe, who claims, in jest, to have practically grown up at Southdale, is delighted to have his 30-minute romantic comedy showcased for “hometown audiences.”

Each evening will be enhanced with appearances by persons directly connected to the films. Popular question-and-answer sessions will provide audiences the benefit of behind-the-scenes sidelights and relevancy.

Festival passes and single-film tickets are available in advance or at the theater box office. Visit www.EdinaFilmFestival.org for more information on ticket purchases and scheduling.



Submitted Image

Edina resident Monica Joy won the first-ever poster contest for the Edina Film Festival. Joy’s work will be used to promote this year’s Festival.

(continued on next page)

In addition to John Swon and Mickie Turk, Film Festival Steering Committee members include Edina residents Kitty O'Dea, Rick Fesler, Ray Meifert, Phil Johnson, Ruth Valgemae and Heather Randall King.

For more information on the Edina Film Festival, visit www.EdinaFilmFestival.org. For more information on the Edina Art Center, visit www.EdinaArtCenter.com.



Tom Gartner

TOM GARTNER, CFP®

Fiduciary Financial Planner
ISC FINANCIAL ADVISORS

☎ (952) 835-1560



Minnesota Center, Suite 270 | 7760 France Avenue South | Minneapolis, MN 55435



ACADEMIC SKILLS

**MAKE THIS YOUR
CHILD'S BEST
SCHOOL YEAR EVER.**

For more than 35 years, Huntington's highly trained tutors have given students the skills, confidence, and motivation needed to get their grades back on track.

- An academic evaluation identifies problem areas
- Programs tailored to address each student's needs
- Highly trained tutors work individually with students
- Huntington improves skills, confidence, and grades

SAVE \$100

WHEN YOU
CALL BEFORE
12/31/13



Huntington.
Your Tutoring Solution

1 800 CAN LEARN® • HuntingtonHelps.com

**EDINA
YORKDALE SHOPPES
952-922-3000**

©2012 Huntington Mark, LLC. Independently Owned and Operated.
*Offer valid for Academic Evaluation or Tutoring, new students only. Not valid with any other offer.

Washburn-McReavy

EDINA CHAPEL
FUNERAL & CREMATION SERVICES

Family Owned & Operated Since 1857



West 50th & Vernon Avenue at Hwy. 100

952-920-3996

www.washburn-mcreavy.com

RE/MAX Results
SENIOR SERVICES

**Real Estate
Designed for Seniors**

We offer services tailored specifically to older adults who would like to sell their home.

Ted Field 612.418.3901
ted@ResultsSeniorServices.net

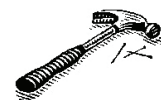
Lisa Dunn 612.599.3484
lisa@ResultsSeniorServices.net

ResultsSeniorServices.net

EDINA HARDWARE

"We speak fluent doohickey & whatchamacallit!"

4510 Valley View Road, Edina
952-925-1133



**CELEBRATING 53 YEARS ON THE CORNER
1960-2013**

CARPOOL TO WORK MONTH

October 2013



Win a \$500 Gas Gift Card!

Carpool to work or school at least once during October. Carpooling can include sharing a ride with a spouse, neighbor, friend or co-worker. If you don't know someone to carpool with, we can help! Request a free carpool match.

www.494corridor.org

*Voted Best Florist in Edina for
the past 5 years!*



Flowers of Edina

**70th & Cahill
(952) 944-5770**

www.FlowersOfEdina.com



\$10 off any order over \$40

Local area only. Not valid with other offers.

Expires Jan. 1, 2014

Founders' Day Celebration Wraps Up Quasquicentennial

According to legend, the naming of Edina in 1888 stopped just short of bloodshed. On one side were the Scots, who favored the name "Edina," a nickname of the Scottish capital Edinburgh. On the other were the Irish, who argued for "Killarney Lakes," to honor their native country. The controversy became so intense, according to one embellished retelling, that the meeting broke out in fisticuffs and the Scots voted on "Edina" after the Irish had gone home.

All are invited to hear the real account of how Edina got its name, as well as other entertaining tales from the City's 125-year history, at a community-wide Founders' Day celebration on Dec. 12.

Festivities begin at 5 p.m. with an open house at historic Cahill School and Minnehaha Grange Hall, where farmers overwhelmingly voted 54-2 to form the Village of Edina on Dec. 12, 1888.

Activities move across the street at 6 p.m. to Edina City Hall, for a social hour and music by the Edina Chorale. The lobby will display a timeline created by the Human Rights & Relations Commission marking Edina's human rights milestones, as well as historic photographs.

A 7 p.m. program features short readings and songs that "celebrate the people who have created our community over the past 125 years," said event chair Joni Bennett, who serves on both the Edina City Council and the Edina Historical Society's Quasquicentennial Committee.

Edina's history will unfold through a series of vignettes, including direct excerpts from residents' diaries and

oral histories. Readings will be interspersed with historically significant songs performed by the Edina Chorale.

"Edina has so many great stories, from pioneer Sarah Baird's account of the name controversy, to Morningside's rallying anthem to secede from Edina, to Southdale's public relations stunts in the 1950s," said Marci Matson, Edina Historical Society Executive Director. "This fast-paced program will hit the highlights of 125 years in 45 minutes."

Invited guests include representatives from the original founding families, federal, state and local elected officials, and perhaps a surprise guest or two, but "the most important guests are the people of Edina," Bennett noted. "This is an event for the entire community to celebrate what makes Edina what it is today."

The evening will close with a reception sponsored by the City of Edina that will include, of course, cake.

Founders' Day will mark the end of the Quasquicentennial celebration year that included a Historic Home Tour, EdinaScapes art show, neighborhood and school reunions and a history-themed July 4th parade, among other events.

For more information about the Quasquicentennial, visit www.edinahistoricalsociety.org.



Clarification

In the story "Historic Home Tour Highlights Three Eras In Edina's History" in the summer issue of *About Town*, the marriage of Lee Anderson and William Fehrenbach was not appropriately acknowledged. The City of Edina regrets the oversight.

DAVID A. COOK, DDS, PA



Enhancing Smiles...
Building Confidence...
Changing Lives



Located at
50th &
France



Complimentary,
Cosmetic,
Restorative &
Implant Consultation

www.smilesatfrance.com

4999 France Ave. South, Suite 230 • Minneapolis • 612-824-7033

Career Change | Work/Life Balance | Encore Career | College Major Selection

Work Right. Live Well.™

Helping people choose careers they love.

Choose or change your career for a lifetime of **satisfaction** and **success**. Your **extraordinary** life is waiting for you.

Request a Complimentary
**Career Strategy
Session**

952.456.8467
www.kellymarielewis.com



Kelly M. Lewis Coaching & Associates
Career Choice Coaching

Heritage of Edina



Is Proud to Present its 5 Star Assisted Living Community

- Private apartments with month to-month rental
- Flexible meal plans
- Transportation for shopping, banking and more
- Physician visits and 24 hour nursing staff on site
- Personal & concierge services
- Wellness program with PTA
- Weekly housekeeping
- Respite and hospice stays
- Age in place with loving care, dignity and serenity

Call for a tour
and a
FREE LUNCH!
(952) 920-9145



*Independent Living,
Assisted Living,
Extended Assisted Living
and Memory Care,
Alzheimer's and
Dementia Unit*

Over 50 years of service to the community

www.heritageofedina.com

YOUR NEIGHBORHOOD REAL ESTATE PROFESSIONALS



EDINA 6800 OFFICE

Pam Allen	952-221-2177
Ann Burbidge	612-889-4177
Jeff and Diane Anderes	952-927-2842
John Everett	952-927-1646
Alyssa Granlund	612-759-5180
Mark Granlund	612-803-8129
Ruthann Holetz	952-927-1624
Patrick Howard	612-382-3109
Jim Jaeckels	612-281-5834
Mary Greig Krieter	612-719-0665
Jane Larson	612-720-1048
John MacKany	952-927-1163
John McDonald	952-927-1197
Kim Melin	952-201-4758
JoanE Mitchell	952-927-1147
Jane Oelfke	952-200-5712
Jude Dugan Olson	952-927-1186
Aaron Ouska	612-940-8020
Kevin Ries	952-927-1196
Tom & Erick Ries	952-927-1191
Margie and John Sampsell	952-927-1195
Josh Sprague	612-501-0252
Jim Starr	612-247-5898
Michael Tierney	952-927-1676
Susan Wahman	952-927-1114
Corky Weber	952-927-1198
Chris Willette	612-388-8828
Dan Willette	952-927-1694

Find us at
edina6800.edinarealty.com

EDINA 50TH & FRANCE

Pam Agaard	952-261-7576
Dave Anderson	612-750-2209
Sandy Bainbridge	952-915-7980
Babette and John Bean	952-924-8722
Megan Brinkman	612-802-5057
Krysta Clark	952-924-8707
Sheila Cronin	952-915-7951
Karen Daly	952-924-8746
Amy Deckas	612-735-7430
Patti Eastman	952-924-8786
Lisa Eckert	952-915-7964
Mary Beth Goulett	612-309-3967
Zeb Haney	952-924-8742
Janie Hays	952-924-8721
Mark Kouatli	612-708-8400
Kyle Litwin	612-803-5595
Bob and Francy Matson	952-915-7950
Brad and Amy McNamara	952-924-8785
Tom and Meg Meyers	952-924-8712
Andy Mitchell	612-242-4514
Andrew Olive	612-669-7452
Marcia Russell	612-965-7997
Margaret Shaw	952-928-9810
Linda Smaby	612-325-7972
Kathie Volland	952-915-7934

Find us at
edina50thandfrance.edinarealty.com

Community Volunteers Enhance Learning For All Students

By Allen Knappenberger
Contributing Writer

Edina Public Schools (EPS) strongly believes in the value of partnership in the education of all its learners. The district's Community Education Services volunteer program is a critical resource in advancing that partnership, connecting residents with their local schools and providing opportunities for them to share their expertise with students of all ages.

"The strength of our volunteer base in Edina is part of what makes this such a successful program," said Director of Community Education Services Val Burke. "We are hoping to build on the past success of the program so that even more students benefit from the knowledge and expertise of our community members. The power of that community connection helps learning come alive for our students and enhances the quality of life for all Edina residents."

Edina Public Schools is committed to using volunteers to promote and strengthen partnerships between the school and community, as well as to help personalize instruction and enrich curriculum for all learners. Marcia Friedman, Volunteer Supervisor for the district, encourages more people to volunteer in the schools to help students understand that what they are learning is applicable to every day life.

"Volunteering provides the hook that gets students excited about learning and helps them connect what's

happening in the classroom to the real world," said Friedman.

Burke and Carrie Cabe, Edina Resource Center Manager, are in the process of looking for ways to improve and enhance the already successful volunteer program. Currently, Cabe is evaluating the program and assessing what changes could be made to further expand volunteer opportunities.

"I want to reinvigorate the program," said Cabe. "We are spending time evaluating how we can best serve our students by bringing in volunteers who have the time and want to be connected to the community and students."

One observation Cabe has already made is that there is a fine line between volunteers who help in the classroom, before and after school, and resource speakers. Most of the time, these three opportunities intersect with one another, which in itself is not bad, but can make it confusing for the volunteer and student when roles are not clearly defined.

Cabe noted that there are three main areas in which volunteers are utilized: basic skills development, which provides academic enrichment opportunities that bring students and volunteers together during the school day; resource speakers who go into the classroom to share their experience and expertise on a particular topic; and homework help where the volunteer provides academic enrichment opportunities before and after school for the students.



Retired scientists from Honeywell volunteer their time at Cornelia Elementary to help students prepare for state science and math tests.

“As we move to improve the program, volunteers will have a better understanding of which area they would most like to participate in and students will know exactly who is helping them and why,” said Cabe. “It is our hope that doing so will help maximize the time when volunteers and students are together to get the most benefit.”

Not only does Cabe want to extend volunteer opportunities and enrich student learning, she also wants to make sure that each volunteer is comfortable and confident in their role.

“The generosity of people in our community always amazes me,” she said. “I just want to help train them and

make them feel comfortable about the subjects they will be dealing with when volunteering. That way, they know what to expect when they walk into the classroom or wherever they may be.”

According to Cabe, volunteering is not only a service for students, but it also gives the residents a chance to experience, first hand, their investment in Edina Public Schools.

“For many of our volunteers, schools look a lot different today then when they went to school, and it is important for them to see how learning needs and instructional strategies have changed so that we can best serve each individual student,” said Cabe. “Volunteering is a great way to build a strong connection of community and build relationships between students and adults alike. It’s something we want to see continue into the future for Edina.”

For more information on volunteering in Edina Public Schools, contact Carrie Cabe at 952-848-3938 or Carrie.Cabe@edinaschools.org.

Allen Knappenberger is Communications Specialist for Edina Public Schools.

City Takes On Community Television Playback

By Jordan Gilgenbach

As a teenager, Nathalie Gage got her start in video by producing content for a community television channel in Minneapolis. Little did she know, years later, she would manage the playback for the community channels in the southwest suburbs.

"I've always liked television and film as a medium to share ideas and stories," Gage said. "When I first started in video, editing was still done by cutting and taping film, and there wasn't anywhere to educate yourself on video production, so I took advantage of public access television."

In July, Gage began as the City's Community Television Administrator, where she coordinates the playback of the education and public access channels for member cities of the Southwest Suburban Cable Commission. Member cities include Eden Prairie, Edina, Hopkins, Minnetonka and Richfield. Gage, who has worked for the City of Edina for more than seven years as a part-time Video Production Assistant, will continue to spend some time producing video content for the City, too.

"It's sort of serendipitous, because public access is where I began and learned how to do video," she said. "I feel like I'm coming back full-circle."

When it came time to renew franchise agreements with Comcast in 2012, the Commission decided to close the production studio in Eden Prairie that had been used by public access producers. A limited number of producers used the facility on a regular basis and the cost to upgrade



Photo by Michael Braun

Nathalie Gage began working for the City of Edina in 2006 as a Video Production Assistant. She now oversees the playback of multiple education, public and government access channels as Community Television Administrator.

the studio's outdated 1990s equipment was high. Instead, the Commission ultimately ended up entering into an agreement with the City of Bloomington for such space for producers. Today, producers from Eden Prairie, Edina, Hopkins, Minnetonka and Richfield can use the production studio at Bloomington Civic Plaza, 1800 W. Old Shakopee Road, for no charge.

During franchise negotiations, it was also decided that Comcast would no longer facilitate playback of the Public-Education-Government (PEG) access channels. The City of Edina was selected to become the Commission's "head-end," overseeing and coordinating the management and playback of the channels by September 2013.

“Edina taking over playback of these channels is a good move for the City because it makes it the hub for a lot of important telecommunication and infrastructure for the future,” said City Manager Scott Neal, who serves as Chair of the Southwest Suburban Cable Commission.

The Commission had a little more than a year to design and build playback facilities at Edina City Hall, 4801 W. 50th St., and hire a Community Television Administrator to oversee playback. All equipment was paid for with funds from Comcast. Going forward, the five member cities will pay for staff time associated with management of the playback facility.

Gage, who holds an associate degree in digital video production from the Minnesota School of Business, was chosen for the Community Television Administrator position because of her previous experience and passion for community television.

“Public access television allows people to exercise their speech rights and get ideas into the public,” Gage said. “Unlike the very broad audience encountered on the web, public access helps to target your audience.”

Channel 14 is the educational access channel, with content provided by the Eden Prairie, Edina, Hopkins, Minnetonka, Richfield and Wayzata school districts. Channel 15 is the public access channel, with content produced or sponsored by anyone in the five member cities. Channel 16 is the government access channel, with content produced by the City’s Communications & Technology Services Department. Later this year, a high-definition government access channel will be launched

in the 800 series to Comcast subscribers in Edina and Eden Prairie.

“Public access gives an opportunity for the ordinary person to reach their peers,” said Leslie Davis, a public access producer. “People already watch cable. It’s my job to capture their attention.”

In September, the City of Edina, with help from the City of Minnetonka’s I.T. Manager, Patty Latham, a member of the Commission, finalized the transition and began managing playback on the access channels for member cities. Since being hired, Gage has worked tirelessly, holding meetings and working one-on-one with public access producers, school district and city staff, and other stakeholders to make the transition seamless.

“Nathalie has been great to work with,” Davis said. “She has been wonderful at all the meetings, and is very deliberate, respectful and courteous.”

Having spent much of her career working in video, Gage is confident and excited for this new venture.

Producers can submit content online or at Edina City Hall between the hours of 7:30 a.m. and 8 p.m. Monday through Friday.

For more information about the Southwest Suburban Cable Commission or to submit a video for playback, contact Gage at 952-826-0344, ngage@EdinaMN.gov or visit www.EdinaMN.gov/swtv.

Spaulding ... STAY!



Photo by Michael Braun

Spaulding, with his buddy Zach Saueressig, outside of SALUT Bar Americain at 5034 France Ave.

By Frank Petrovic

"Spaulding makes people smile," proclaimed Kip Clayton, Vice President of Marketing for Parasole Restaurant Holdings, Inc. "Kids love him, and the residents love him."

"Spaulding" is a bronze statue of an extremely lovable dog. He resides outside SALUT Bar Américain in downtown Edina at 50th & France. In order to keep living there, however, he needs our help.

An entry into the 2012 Edina Public Art Exhibit, Spaulding was installed in May of that year. After one year, he was to be returned to his creator, artist Heidi Hoy. This plan proved unacceptable due to overwhelming public response. He quickly became one

of Edina's favorite works of art, and steps were taken to prevent Spaulding from running away.

SALUT and its parent company, Parasole, have become best friends with Spaulding and are heavily involved in a current fundraising effort aimed at keeping him right where he is for a long, long time. He has also become the mascot for a broader movement to raise funds to support public art across Edina. Spaulding also has many other friends working hard to accomplish these goals. They include City Council Member Ann Swenson, Edina Community Foundation Executive Director Dick Crockett, Edina Lions Club, City Manager Scott Neal, Public Art Committee Chair Barbara La Valleur, 50th & France Business & Professional Association Executive Director Rachel Thelemann, Edina Art Center and many others.

"The Edina Public Art Committee was able to rent him for a period of one year, but that arrangement will soon end," said La Valleur. "The only option left is to permanently adopt Spaulding. That's where SALUT and the public come in."

A number of events are currently planned to raise money to save Spaulding:

- 8 a.m.-1 p.m. Sunday, Oct. 6, at the Lions Annual Waffle Breakfast at Braemar Golf Course, 6364 John Harris Drive, Edina, MN 55439, there will be a tabletop display with a video of kids playing with Spaulding and information on how to contribute to the cause.
- 11 a.m.-1 p.m. Saturday, Oct. 26, the 50th & France Annual Pumpkin Festival will include activities around Spaulding and opportunities to donate.

- Donations marked “Spaulding” may also be sent directly to the Edina Community Foundation, 5280 Grandview Square, Edina, MN 55436.

“This piece was a real departure for me,” said Hoy. “Much of my work is pretty serious, but I was commissioned to do this piece right after I’d adopted a dog – my first – and I really enjoyed the opportunity to create something fun; to really make people happy.”

La Valleur thinks the bronze canine is a special piece of art that really reflects the joy Hoy felt as she got to know her first pooch.

“I certainly think that she succeeded in creating a piece of art that reflects the joy of having a dog.”

Crockett agrees.

“She produced a really fun work. I mean you can’t look at Spaulding and not want to touch it, have more contact with it – great for kids, adults, seniors. This really is an Edina dog.”

“In order for us to keep Spaulding in the community, we need to have some charitable giving to allow us to purchase it from the artist,” said Crockett. “We need \$7,650 to buy this piece of art for the community.”

Zach Saueressig, General Manager of SALUT, welcomes the challenge and believes that if the public’s generosity matches their love of Spaulding, the fundraising goal will certainly be attained.

“With the support of our guests, civic organizations like the Edina Lions Club and the Edina Community Foundation, we’re honored to spearhead this effort.”

For information on supporting Spaulding, contact the Edina Community Foundation, 952-833-9573, or visit www.edinacommunityfoundation.org. For more information about public art in Edina, visit www.EdinaPublicArt.org.

Looking for new digs?

FRED LITTLE & TEAM



We'll sniff out a new home for you.

Fred Little, Realtor, GRI

952-220-3733

fredlittle@edinarealty.com

www.fredlittle.edinarealty.com

Edina Realty



Nolan Begins As Transportation Planner

By Jordan Gilgenbach

One of the best ways to learn about a City's transportation health is to experience it first-hand. When Mark Nolan was first hired as the City's Transportation Planner in June, that's what he did, by biking and running on local and regional trails.

A Chicago-area native with an interest in design since high school, Nolan moved to Minneapolis to pursue a degree in architecture at the University of Minnesota. He then pursued a master's degree in urban planning from the University of Illinois.

"I really enjoy both aspects of the field – the design side with street and cityscapes and the planning side," Nolan said. "A lot of urban planners have design backgrounds. It's the relationship between designing an aesthetically pleasing and usable transportation system and how to improve the user experience that draws me in."

In this newly created position, Nolan will oversee the budget of the new Pedestrian and Cyclist Safety (PACS) fund, which is financed by utility franchise fees. As with many new positions, Nolan will be able to really shape his position as well as Edina's transportation system.

"I jumped right in and hit the ground running," Nolan said. "The wheels were already rolling when I was hired, but I am really excited to help mold and shape where things are going in Edina."

"Mark's experience in urban transportation planning is a great addition to the future transportation planning

that is needed in the City," said Director of Engineering Wayne Houle. "We are very excited to have him as part of our team."

Nolan will also administer the allocation of the PACS funds, which will be used to expand sidewalk and bike facilities throughout the City. Approximately \$1 million is collected each year through the utility franchise fees for the PACS fund. Nolan will help determine where new sidewalks and bike facilities are constructed every year.

"Sidewalks are costly to build," Nolan said, so he will be working closely with Houle to best allocate those funds. "We get quite a few calls from residents requesting sidewalks around the City."

The City is currently working to determine the feasibility of sidewalks in six areas of the community – on 42nd Street, West Normandale Road, East Normandale Road, an Valley View Road, Xerxes Avenue between 56th and 60th streets, Interlachen Boulevard and Cornelia Avenue.

Nolan will work closely with the Transportation Commission, becoming its staff liaison in the next year. In addition, he is working on the City's initiatives for Active Routes to Schools, a state program to expand safe infrastructure to schools and to add curriculum to middle school physical education classes to teach safe transportation habits.

"Our ultimate goal is to make streets safe and usable for all users," Nolan said. "It's exciting to be involved with transportation in Edina neighborhoods. With the end of *do.Town*, we still have the opportunity to focus on health

and active living in the community.” *do.Town* was an 18-month pilot project between the cities of Bloomington, Edina and Richfield and Blue Cross and Blue Shield of Minnesota with a goal of making the healthy choice the easy choice. The campaign ended in April 2013.

Nolan has more than 20 years of experience in transportation, transit and redevelopment planning, engineering and design. Before joining the City, Nolan was a Senior Associate at Biko Associates, Inc., an urban planning and community engagement firm based in Minneapolis. There, he managed client relationships for neighborhood redevelopment and transit system projects throughout the Midwest.

“Mark is very contentious, a hard worker and has great attention to detail,” said Bill Smith, owner of Biko Associates. “He was a generalist planner with very well-rounded skills.”

One of the bigger projects Nolan has been working on recently is the 54th Street reconstruction. Since being hired, he has helped with community outreach to help shape how the street will look and be designed when it is reconstructed next year. The project is the first to be guided by the Living Streets Policy, adopted by the City Council in August. Nolan is spearheading efforts to plan formal implementation of the policy.

“For me, incorporating Living Streets into City policy demonstrates the commitment of the City Council to reinforce Edina as a healthy, safe and special place to live. It highlights the importance of balancing the needs of all users of our streets,” Nolan said. “Not every street

is appropriate for every mode of transportation, but the policy – and later, the plan – will provide the framework to help staff determine the appropriate use of Living Streets principles to each project.”

The Living Streets Plan is set to be completed and ready for implementation in late 2014.

Nolan personally understands transportation planning by leading an active lifestyle. He can often be seen biking regional trails and training for half marathons. He lives in southwest Minneapolis with his two children.

For more information, contact the City of Edina’s Engineering Department at 952-826-0371.



Photo by Michael Braun

Mark Nolan oversees the new Pedestrian and Cyclist Safety (PACS) fund as the City’s new Transportation Planner.

COLDWELL BANKER
BURNET

Serving the Edina
French-American
Community

Minneapolis Lakes Office
SaCattelin@CBBurnet.com
612-924-4352 Office
612-703-8229 Mobile
www.StephaneCattelin.com

**The International
Approach to Real Estate**

Stephane Cattelin
GRI, e-PRO, CIPS, TRC

Realtor/Agent Immobilier

SUPER REAL ESTATE AGENT

Diamond Society
COLDWELL BANKER BURNET



Owned and Operated by NBT Incorporated

Print as an art form



JessenPress.com (952) 929-0346



**edina facial aesthetic
SPECIALIST**

*Dr. Tompach and his team at
Edina Facial Aesthetic Specialist
are committed to excellence and
dedicated to making your visit with
us personalized and comfortable.*

CS

Services and products include
Botox® Cosmetic, Juvéderm® Ultra XC, Latisse®,
Clarisonic, and Revision Skincare

6545 FRANCE AVENUE SOUTH #690 | EDINA, MN 55435 | 952.925.2525
edinafacialaesthetics.com

A Hole-in-One for Meeting Space

Valliere Room at Braemar Golf Course




- Breathtaking views
- Seats up to 200 guests
- Ample patio seating
- Off-site catering allowed
- Public welcome

To schedule an event or for more
information, contact Amy Smith,
952-903-5765 or asmith@EdinaMN.gov.

6364 John Harris Drive, Edina
www.BraemarGolf.com





Planning Matters

Kimley-Horn Studying 50th & France Parking

The City has retained a consulting firm to plan parking improvements in downtown Edina at 50th & France.

Building off of work done in 2012 by Walker Parking, Kimley-Horn will identify strategies for increasing the efficient use of parking spaces; determine appropriate streetscape improvements to update and unify the shopping area; study expansion options of the North Ramp, including new commercial space on the street level; and study options for improving the South and Middle ramps.

In addition to completing a feasibility study, the firm will develop design documents for priority repairs and lighting improvements to be completed yet this year.

The maximum cost of the work will be \$260,000, which will be assessed back to the commercial properties in the area.

It is anticipated that if the feasibility study is approved, Kimley-Horn would be hired again to prepare design documents so that the preferred solutions can be implemented and constructed in 2014 and 2015.

Housing Development Approved For Northwest Edina

A new housing development – Vernon Avenue Housing – is planned for northwest Edina.

The City Council in August approved the redevelopment of three lots located at 5109 to 5125 W. 49th St.

The developer, Hunt Associates, plans to tear down the existing single-family home and two apartment buildings on the site and build a new, 16-unit attached housing development. The properties total 1.43 acres, so the proposed density of the project will be 11 units per acre.

The site plan for the new townhouses includes a public sidewalk that connects the Todd Park Neighborhood to Vernon Avenue.

The developer has two years from the date of Council approval to start construction.

‘Aurora on France’ planned for France Avenue

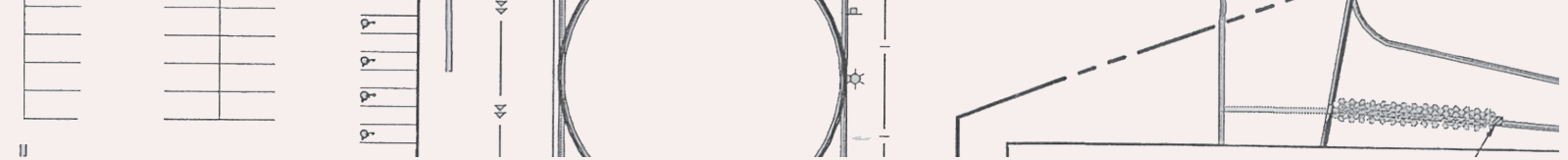
The vision for the redevelopment at 6500 France Ave. has changed.

Earlier this year, the City Council approved a proposal to redevelop the property with a five-story medical office and retail building with an attached four- or five-level parking ramp.

Mount Development and Aurora Investments have since requested consideration of a “change in use” to 111 units of senior assisted and independent living; 66 units of traditional care, skilled nursing and memory care beds; and 18 care suites. The “care” suites would accommodate short-term stays by patients who have had surgery at Fairview Hospital or Twin Cities Orthopedic.

The building would be similar in style to the previously approved plan and will still be five stories in height. A pedestrian skyway would connect the building to the hospital parking ramp to the north. The previously

(continued on next page)



approved parking ramp would be replaced with housing. Parking would be provided underground.

The City Council approved changes to the Comprehensive Plan to allow for residential units on the property and granted preliminary rezoning and the preliminary development plan for the project. The developers are expected to seek final approvals later this year.

France Avenue Pedestrian Improvements Postponed to 2014

Drivers on France Avenue will not be slowed by City construction two summers in a row.

The City had planned to begin construction in July along the corridor to enhance intersections and provide safer crossing for pedestrians. Next summer, landscaping was to be done.

However, when the City opened bids for the intersection improvements, just one contractor had submitted a bid and it was more than \$500,000 over the City's estimate. The City decided to reject the bid and bid it out again in the fall with the landscaping portion of the project. Construction, then, would all occur in 2014.

The project is important for pedestrians and bicyclists in the area. By removing the free right-turn islands, the corners of the intersections at 66th, 70th and 76th streets will be expanded to increase space for pedestrians and decrease the length of the crossing. ADA-compliant pedestrian accommodations, pedestrian-level lighting and planters will be installed.

In addition, "median refuge islands" will be built. Median refuge islands are the space between northbound and southbound traffic where pedestrians or cyclists may need to wait when crossing France.

Traffic signals will be improved with accessible pedestrian signals, countdown timers and vehicle and bike detectors. And, to maximize pedestrian safety, the lanes on France Avenue will be narrowed from 13 and 14 feet wide to 11 and 12 feet wide. This will add to the space needed to create a boulevard between the sidewalk and road as well as the refuge in the middle of the busy roadway.

The project is estimated to cost just over \$4 million. The City has received a federal grant of about \$1 million for part of the project.

Hospital Plans Expansion

Fairview Southdale Hospital is gearing up for a major expansion.

The hospital is located off of Highway 62 at 6401 France Ave. This summer, the City Council approved a site plan for a two-level, nearly 89,000-square-foot addition on the north side of the hospital for a new Emergency Care and Urgent Care Center.

Emergency services would be offered on the main floor. Observation units to accommodate patient stays of fewer than 24 hours would be built on the second floor of the addition. Offices would be in the basement of the addition.

The existing Emergency and Urgent Care facility would be remodeled for hospital use. The helipad, which sits

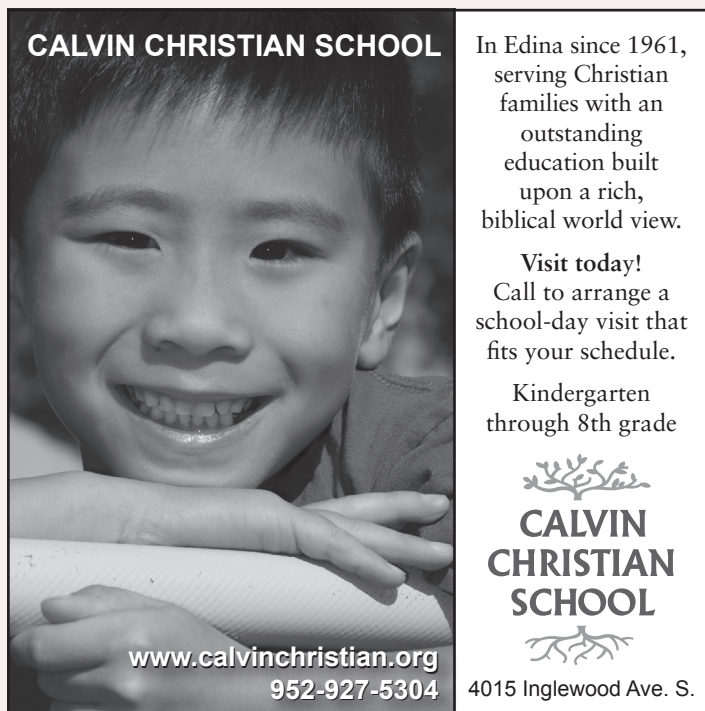
where the addition will be located, will be moved to the roof of the existing building, above the current Emergency Care entrance. The hospital's existing central plant will be enlarged to accommodate the new space.

Hospital officials hope to start construction this fall.

For more information, contact the City of Edina's Planning Division, 952-826-0369, or Economic Development Manager Bill Neuendorf, 952-826-0407.



AHCC
Adult Help and Companion Care
Exceptional 24 Hour Personal At-home Adult Assistance & Care
NURSING | HHA'S | COMPANIONS
612-708-1079
www.adulthelpcare.com
Assisting throughout the Twin Cities.
Insured • Licensed • Dependable



CALVIN CHRISTIAN SCHOOL
In Edina since 1961, serving Christian families with an outstanding education built upon a rich, biblical world view.
Visit today!
Call to arrange a school-day visit that fits your schedule.
Kindergarten through 8th grade
CALVIN CHRISTIAN SCHOOL
www.calvinchristian.org
952-927-5304
4015 Inglewood Ave. S.



the **SOUTHDALE Y**
FREE WEEK PASS
\$0 ENROLLMENT, \$150 SAVINGS
*OFFER EXPIRES 10/31/2013
• 180+ GROUP EXERCISE CLASSES
• FULLY EQUIPPED FITNESS CENTER
• SWIMMING & FAMILY POOL
• ALL AGES & FITNESS LEVELS
• FREE DROP OFF CHILD CARE
TO ACTIVATE CALL KARL WILBUR 952 897 5476

The Last Word



By Scott H. Neal
City Manager

The City has started a new practice of doing a biennial Quality of Life Survey with a professional public polling company. The polling work was done earlier this year. The results are in – and they are extraordinary. There are so many aspects of the survey I

could talk about, but with the limited space I have in this forum, I'll touch on two responses that I am especially pleased with.

The first response is to a question that asks respondents about the general direction of the community: "All in all, do you think things in Edina are generally headed in the right direction, or do you feel things are off on the wrong track?" Ninety-two percent answered "Right Direction." Six percent answered "Wrong Track." Two percent said they didn't know. I really like this result because it affirms for me, by a margin of 15-to-1, that we are leading the community in the right direction. Even if you control for the mythical "Minnesota Nice" variable, 15:1 is a very high ratio of respondents who think positively about the future of Edina. As someone who helps guide the community into the future, that response feels good to me.

The other survey response that resonated positively with me was to this question: "Other than voting, do you think that if you wanted to, you could have a say about how

things are run in this community?" Eighty-four percent said "Yes." Twelve percent said "No." Four percent said they didn't know. At a rate of 7-to-1, respondents said they could and would engage city government about how the community is run. I appreciate the nuance of this response for two reasons. It tells me that residents think we are open to hearing their concerns. If they are concerned or have an opinion, they'll feel comfortable sharing it with us. But, I think the inverse is also true. If residents are not expressing their concerns or input, their decision not to engage us might be their way of telling us they trust us to make the right decisions. I also find some comfort in that.

The 2011 and 2013 Quality of Life Survey results are available on the City's website under "Resources." I encourage everyone to look them over. Analyze the results for yourself, and help us learn from them, too.

We don't rest on our laurels in Edina.

Got A House? We'll Buy It!



JMS is Edina's 2012 #1 Top Permitted New Home Builder. Sell Us Your Land or Build with Us! **Call Today!**



JMS Custom Homes

VOTED 2011 BUILDER OF THE YEAR!

952.949.3630 | www.JMSCustomHomes.com

Supporter Edina Community Foundation • MN Builder Lic. #BC392462



AboutTown Magazine

City of Edina

4801 West 50th Street

Edina, MN 55424

www.EdinaMN.gov

PRESORT STD
U.S. POSTAGE
PAID
TWIN CITIES MN
Permit No. 3932

ECRWSS
POSTAL PATRON
CAR-RT-WS



 printed on recycled paper

